

# LONGWOOD UNIVERSITY



Reclassifying  
NCAA  
Division I

Greg Prouty, Assistant AD for Media Relations • Office: 434.395.2097 • Cell: 434.390.0571  
Athletics Complex, T2 M • 201 High Street • Farmville, VA 23909-1899  
E-Mail: proutygd@longwood.edu • Fax: 434.395.2568 • www.longwoodlancers.com

## Longwood University All-Time versus 2005-06 Opponents

Nebraska .....	0-1
Louisiana Tech .....	0-1
Yale .....	0-1
Virginia-Wise .....	5-1
William and Mary .....	0-2
Liberty .....	15-5
<b>UMKC .....</b>	<b>0-1</b>
Kansas State .....	0-0
#4 Villanova .....	0-0
High Point .....	4-8
Valparaiso .....	0-1
VCU .....	0-0
College of Charleston .....	0-0
Long Island .....	0-0
Rider .....	0-0
Richmond .....	0-0
IPFW .....	0-0
Navy .....	0-1
Savannah State .....	0-0
Hartford .....	0-1
North Carolina A&T .....	0-0
Texas A&M-Corpus Christi .....	0-1
Shenandoah .....	2-0
Virginia .....	0-0
James Madison .....	0-1
Hampton .....	0-0
Utah Valley State .....	0-3
<b>Totals .....</b>	<b>26-28 (.481)</b>

## 2005-06 Division I Independent Records (through November 30)

<u>Team</u>	<u>Record</u>	<u>Pct.</u>
Texas A&M-CC	3-1	.750
North Dakota State	2-3	.400
<b>Longwood</b>	<b>2-4</b>	<b>.333</b>
Texas-Pan American	2-4	.333
Utah Valley State	2-4	.333
IPFW	1-4	.200
Savannah State	1-4	.200
South Dakota State	1-4	.200
UC Davis	0-4	.000
Northern Colorado	0-6	.000

## GAME #7 DECEMBER 3, 2005

**Opponent** ..... UMKC  
**Site** ..... Kansas City, Missouri  
**Facility** ..... Municipal Auditorium  
..... (9,827)  
**Tip-Off** ..... 8 p.m. ET  
**Radio** ..... WVHL, 92.9 FM  
**Talent** ..... Jon Schaeffer  
**Internet** ..... longwoodlancers.com



## Probable Starters LONGWOOD LANCERS (2-4)

F	1-Clayton Morgan, 6-7, Jr. 7.0 ppg., 5.7 rpg., 1.2 apg.
G	12-Bryan Butler, 6-0, Fr. 12.2 ppg., 2.8 rpg., 2.2 apg.
G	20-Michael Jefferson, 6-3, Jr. 14.3 ppg., 2.5 rpg., 2.8 apg.
G-F	45-Maurice Sumter, 6-5, Jr. 11.8 ppg., 5.3 rpg., 2.3 apg.
F	50-Lamar Barrett, 6-6, So. 7.5 ppg., 3.3 rpg., 2.0 apg.

## UMKC KANGAROOS (2-1)

G	22-Tim Blackwell, 6-4, So. 10.0 ppg., 4.3 rpg., 3.0 apg.
F	23-Dee Ayuba, 6-6, Jr. 17.0 ppg., 7.7 rpg., 1.0 apg.
F	33-Brian Gettinger, 6-9, Fr. 1.3 ppg., 1.7 rpg., 0.3 apg.
G	44-Quinton Day, 6-1, Jr. 20.7 ppg., 3.0 rpg., 5.3 apg.
F	45-Blake Crawford, 6-8, Jr. 6.7 ppg., 4.0 rpg., 0.7 apg.

## Longwood University 2005-06 Men's Basketball Schedule/Results (2-4)

### November

18	@Nebraska*-1	L 65-80
19	vs. Louisiana Tech*-1	L 73-83
20	vs. Yale*-1	L 67-70
26	Virginia-Wise	<b>W 93-49</b>
28	William and Mary*	L 75-88
30	Liberty*	<b>W 88-75</b>

### December

3	@UMKC*	8:00
5	@Kansas State*	8:00
10	vs. #4 Villanova*#	7:30
17	<b>High Point*</b>	2:00
20	<b>Valparaiso*</b>	7:00
22	@VCU*	7:30
29	@Charleston*-2	7:30
30	vs. Long Island*-2 or Rider*-2	5:30 or 7:30

### January

2	@Richmond*	4:00
5	@IPFW	8:00
7	@Valparaiso	8:05
17	@Navy	7:30
21	@Savannah State	4:00
28	<b>Hartford*</b>	2:00
30	<b>IPFW*</b>	7:00

### February

2	<b>North Carolina A&amp;T</b>	7:00
4	@Texas A&M-CC	8:00
8	<b>Shenandoah</b>	7:00
13	@Liberty*	7:00
15	@Virginia*	7:00
18	<b>James Madison*</b>	3:00
20	@Hampton*	7:00
25	<b>Savannah State*</b>	2:00

### March

4	<b>Utah Valley State*</b>	3:00
All Times Eastern; PM Home Games In <b>Bold</b> 1-John Thompson Foundation Basketball Challenge; Lincoln, Neb. 2-College of Charleston Classic; Charleston, S.C. *WVHL, 92.9 FM Kickin' Country #Boardwalk Hall; Atlantic City, N.J.		

### PRONUNCIATION GUIDE

Chad Kosmo .....	Koz-mo
Husein Pistoljevic .....	Hoo-sane
.....	Pis-tol-lee-uh-vich
Doug Thibault .....	T-bow

**Longwood University  
Career Games/Games Started**

<b>No.-Player</b>	<b>G/GS</b>
20-Michael Jefferson	64/64
45-Maurice Sumter	64/64
32-Husein Pistoljevic	64/29
44-Leland Beale	41/0
1-Darren Holmes	39/0
50-Lamar Barrett	37/37
10-Brandon Giles	37/0
42-Chad Kosmo	35/35
22-Dana Smith	36/4
15-Joel Rowe	33/0
30-Jon Larson	30/0
12-Bryan Butler	6/6
1-Clayton Morgan	6/2
3-Kirk Williams	6/0

**2005-06  
LONGWOOD UNIVERSITY  
RECORD WHEN ...**

Playing ranked teams .....	0-0
Leading at the half .....	2-1
Trailing at the half .....	0-3
Tied at the half .....	0-0
In overtime .....	0-0
Outrebounding opponent .....	2-0
Opp. outrebounds LU .....	0-4
Teams tie in rebounds .....	0-0
Shooting 50% or better .....	0-1
Shooting less than 50% .....	2-3
Opp. shoots 50% or better .....	1-2
Opp. shoots less than 50% .....	1-2
LU shoots better than opp. ....	1-0
Opp. shoots better than LU .....	1-4
LU scores 80 or more .....	2-0
LU scores less than 80 .....	0-4
Opp. scores 80 or more .....	0-2
Opp. scores less than 80 .....	2-2
LU has 5 or more 3s .....	1-4
LU has less than 5 3s .....	1-0
LU has 15 or less TOs .....	2-1
LU has more TOs than opp. ....	0-1

**Series History**

Longwood University and UMKC are meeting for only the second time ever tonight in the sport of men's basketball. The Kangaroos lead the young series 1-0 after defeating the Lancers 74-51 last Feb. 14 in Virginia as returning starter Quinton Day scored 14 points. UMKC jumped ahead early, leading 37-16 at halftime en route to the win. Michael Jefferson scored 12 points for LU.

**Coaches Corner**

Longwood University head coach Mike Gillian (North Adams State, 1986) is in his third year guiding the

Lancers. His overall record at Longwood is 8-56, including 2-4 this year, also his third year as a collegiate head coach.

UMKC head coach Rich Zvosec (Defiance, 1983) is in his fifth year with the Kangaroos. He is 44-46 at UMKC, including 2-1 this year, and is now 163-206 in this, his 14th year as a collegiate head coach.

**About UMKC**

UMKC is 2-1 following a 60-42 road loss at Missouri this past Tuesday (Nov. 29). In that game, the Kangaroos trailed just 24-15 at the intermission before the Tigers outscored their visitors 36-27 in the second half.

Dee Ayuba led the way for UMKC with a double-double of 11 points and 12 rebounds, while Tim Blackwell had 10 points.

The Kangaroos own home victories this season over similar-named Central Methodist (74-61) and Central Michigan (75-65).

Quinton Day leads UMKC with his 20.7 points, adding 5.3 assists and 5.0 steals. Ayuba adds 17.0 points and 7.7 rebounds, while Blackwell contributes 10.0 points and 4.3 rebounds.

**About Longwood**

Longwood is 2-4 following an 88-75 home win past Liberty this past Wednesday (Nov. 30) in Willett Hall. In that game, the Lancers led 17-8 early while building a 44-25 lead at the intermission. The Lancers extended the advantage to 72-47 before the visitors managed to reduce the final margin.

Michael Jefferson led five double-figure scorers for Longwood with a game-high 22 points, while Kirk Williams came off the bench to score a career-high 17 points. Maurice Sumter and Bryan Butler each added 15 points, while Clayton Morgan had 12 points.

It was Longwood's first win over a Division I opponent since last year's victory over Howard (Dec. 18, 75-69), and also the Lancers' 15th win over Liberty in 20 overall meetings; though the first contest between the two schools since February 8, 1988.

Jefferson leads Longwood with his 14.3 points per game, adding 2.8 assists, followed by Butler (12.2 points, 2.3 steals) and Sumter (11.8 points, 5.3 rebounds).

**Jefferson Approaching 1,000  
Career Points**

Michael Jefferson is closing in on 1,000 career points at Longwood, entering tonight's game with 972 points. When he does surpass the magical point total, he will become only the 14th Lancer to score 1,000 career points.

The all-time leading scorer at Longwood is Kevin Jefferson (1986-90) who totaled 1,806 career points. Number two on the list? None other than Jerome Kersey (1980-84) who scored 1,756 career points for the Lancers. Ironically, Kersey was just back on-campus last weekend (Nov. 26-28) as he was a member of the inaugural Longwood University Athletics Hall of Fame Class. The former 17-year NBA veteran was present at both the UVA-Wise and the William and Mary (Nov. 28) home contests in Willett Hall.

Maurice Sumter could reach the 1,000-point plateau this season as well. He currently has 708 career points and would only need to slightly improve upon his current 11.8 scoring average to surpass the milestone this year.

**John Thompson  
Foundation Challenge**

Longwood opened its 2005-06 season Nov. 18-20 in Lincoln, Nebraska at the John Thompson Foundation Challenge hosted by the University of Nebraska. The Lancers played Nebraska of the Big 12 Conference in the season-opener Nov. 18, falling 80-65, followed by hard-fought losses against Louisiana Tech of the Western Athletic Conference (Nov. 19, 83-73) and Yale of the Ivy League (Nov. 20, 70-67).

**Jefferson Keeps Streak Alive**

Jefferson has now been named to *All-Tournament Teams* for three-straight seasons. He was selected to the John Thompson Foundation Challenge All-Tournament Team for this three-game efforts in Lincoln, Nebraska, averaging 12.3 points and 2.7 assists, including a team-high 26 points against Louisiana Tech (L 83-73).

Jefferson was also named to the Las Vegas Holiday Classic All-Tournament Team last Dec. 23-31 after averaging 24.6 points, 5.4 rebounds, and 4.2 assists against four NCAA Tournament teams from the previous year; includ-

**2005-06 LONGWOOD UNIVERSITY NUMERICAL ROSTER**

<b>No.</b>	<b>Name</b>	<b>Position</b>	<b>Year</b>	<b>Ht.</b>	<b>Wt.</b>	<b>Hometown/Last School</b>
00	Darren Holmes●●	Forward	Junior	6-6	215	Virginia Beach, Va./Princess Anne
1	Clayton Morgan	Forward	Junior	6-7	230	Brooklyn, N.Y./Fashion Institute (JC)
3	Kirk Williams	Forward	Freshman	6-6	180	White Plains, N.Y./Woodlands
10	Brandon Giles●	Guard	Sophomore	5-10	150	Gaithersburg, Md./Magruder
12	Bryan Butler	Guard	Freshman	6-0	170	Woodbridge, Va./Potomac
15	Joel Rowe●●	Guard	Junior	6-1	190	Colonial Heights, Va./Colonial Heights
20	Michael Jefferson●●@	Guard	Junior	6-3	200	Chesterfield, Va./Meadowbrook
22	Dana Smith●	Guard-Forward	Sophomore	6-5	225	Woodbridge, Va./C.D. Hylton
30	Jon Larson●●	Forward	R-Junior	6-6	190	Leesburg, Va./Loudoun County
32	Husein Pistoljevic●●@	Guard	Junior	6-2	185	Richland, Wash./Hanford
42	Chad Kosmo●	Center	Senior	6-11	260	Northport, Maine/St. Petersburg (JC)
44	Leland Beale●●	Forward-Center	Junior	6-8	255	Poquoson, Va./Oak Ridge Military
45	Maurice Sumter●●@	Guard-Forward	Junior	6-5	180	Alexandria, Va./T.C. Williams
50	Lamar Barrett●	Forward	Sophomore	6-6	190	Providence, R.I./St. Andrew's School

●Returning Letterwinners; @Captains

**Head Coach:** Mike Gillian

**Assistant Coaches:** Bill Reinson, Doug Thibault, Michael Huger

ing #1 Illinois (30 points, 6 assists) #17 Cincinnati (27 points), Northern Iowa (20 points), and Valparaiso (22 points). He was picked for the National Provisional All-Tournament Team March 4-5, 2004 after averaging 20.0 points, 4.5 rebounds, 4.0 steals, and 3.0 assists in two games played in Fort Myers, Florida at Florida Gulf Coast University.

### Freshmen Enjoy Impressive Debuts

Bryan Butler and Kirk Williams have been quite impressive while making their respective collegiate debuts for Longwood this year. Butler has started each game and has averaged 12.2 points, 2.8 rebounds, 2.3 steals, and 2.2 assists. The first-year guard has scored a career-high 15 points on three different occasions, adding a team-best 12 three-pointers.

Williams has played off the bench while posting 8.8 points and 4.5 rebounds, shooting 59% (19-32) from the field, including highlight-reel dunks already this year against Nebraska, Louisiana Tech, and Liberty.

### Four Starters Return; 94% Of Offense Back

Longwood returns four starters among 11 letterwinners from a year ago, including the top eight scorers overall who combined for 94 percent (1,865 of 1,978 points) of the team's offense. The same eight combined to play 5,688 of the squad's 6,275 minutes overall (91%), each of the eight players averaging at least 15.0 minutes per game.

The returning starters are juniors Michael Jefferson and Maurice Sumter, who have each started every game of their respective careers, along with senior Chad Kosmo, and sophomore Lamar Barrett.

### Jefferson Does It All

Jefferson has led the team in scoring for each of the past two seasons, and averaged 15.4 points a year ago, including a career-high 30 points at #1 Illinois. The third-year player added 4.6 rebounds, and 2.8 assists while leading the team in eight offensive statistical categories. Jefferson also grabbed a career-high 14 rebounds at Quinnipiac with two double-doubles among 24 double-figure scoring games. He posted 11 20-point games, and the one 30-point game while leading the team in scoring 17 times. Jefferson's 30 points at top-ranked Illinois were the second-highest individual point total against the Fighting Illini last season, only surpassed during the second-round of the NCAA Tournament. Not surprisingly, he was deservedly named to the Division I All-Independent second-team a year ago.

Jefferson was named to the preseason *Street & Smith's* magazine All-Independents Team, as well as the *Lindy's* magazine All-Independent first-team.

### Sumter Is Everywhere

Sumter averaged 10.9 points as a sophomore, and also led the Lancers in rebounding (6.0) while adding 2.4 assists, 51 steals, and 23 blocks. He scored a season-high 23 points against

South Carolina State and had two double-doubles among 18 double-figure scoring games. The versatile Sumter led the team in rebounding 12 times, in steals 15 times, and in blocks 10 times.

Sumter was named to the preseason *Lindy's* magazine Independent Honor Roll as the Most Versatile.

### Kosmo, Barrett Return

Kosmo (1.3 points, team-best 5.0 rebounds) was a pleasant addition to the program a year ago from the junior college ranks and promptly started all 31 games while averaging 6.2 points, 5.7 rebounds, and 1.5 blocks. He posted a career-high 12 points at #1 Illinois, a perfect 6-6 from the floor with seven rebounds in 16 minutes. Kosmo also grabbed a career-high 11 rebounds against Utah Valley State, and blocked a career-high five shots on two occasions. He posted one double-double, and led the team in rebounding 12 times and in blocks 17 times.

Barrett (6.0 points, 4.0 rebounds) also started all 31 games while averaging 9.7 points, 4.9 rebounds, and 1.9 assists, adding 28 steals and 26 blocks. He scored a career-high 23 points at Northern Colorado, and grabbed a career-high 11 rebounds at Quinnipiac. Barrett had one double-double among 15 double-figure scoring games, including the 20-point game. Another versatile player, he led the team in scoring seven times, in rebounding five times, in assists eight times, in steals nine times, and in blocks eight times. Barrett was named

**2005-06 ESPN/USA Today  
Coaches Poll**  
(as of November 28)

1. Duke (27) .....	769
2. Texas (3) .....	737
3. Connecticut (1) .....	721
<b>4. Villanova .....</b>	<b>655</b>
5. Oklahoma .....	639
6. Louisville .....	594
7. Gonzaga .....	572
8. Boston College .....	557
9. Memphis .....	495
10. Kentucky .....	478
11. Florida .....	420
12. <i>Illinois</i> .....	<i>380</i>
13. Arizona .....	346
14. Michigan State .....	323
15. Iowa .....	320
16. Indiana .....	255
17. UCLA .....	214
18. Alabama .....	201
19. Washington .....	177
20. Maryland .....	174
21. North Carolina State .....	159
22. George Washington .....	134
23. <i>Wake Forest</i> .....	<i>123</i>
24. Syracuse .....	94
25. LSU .....	79

**2005-06 Associated Press Poll**  
(as of November 28)

1. Duke (61) .....	1,785
2. Texas (6) .....	1,696
3. Connecticut (4) .....	1,682
<b>4. Villanova (1) .....</b>	<b>1,493</b>
5. Oklahoma .....	1,465
6. Gonzaga .....	1,371
7. Louisville .....	1,331
8. Boston College .....	1,296
9. Memphis .....	1,202
10. Kentucky .....	1,079
11. Florida .....	1,023
12. <i>Illinois</i> .....	<i>866</i>
13. Michigan State .....	860
14. Iowa .....	852
15. Arizona .....	808
16. UCLA .....	534
17. Indiana .....	533
18. Washington .....	455
19. George Washington .....	422
20. Nevada .....	412
21. Alabama .....	404
22. <i>Wake Forest</i> .....	<i>339</i>
23. Maryland .....	282
24. North Carolina State .....	236
25. LSU .....	196

2005-06 Longwood University  
opponents in **bold**;  
2004-05 Longwood University  
opponents in *italics*

to the Columbia Classic All-Tournament Team while making his collegiate debut a year ago, averaging 17.5 points during his first two appearances. He was also selected to the Division I Independent All-Newcomer Team a year ago.

Barrett was named to the preseason *Lindy's* magazine All-Independent second-team.

**Experienced Depth**

Other top returning letterwinners include junior Husein Pistoljevic (3.6 points), along with sophomores Dana Smith (7.5 points) and Brandon Giles (2.5 assists).

Pistoljevic started 14 of 31 games while averaging 7.6 points, including 67 three-point field goals. He scored a season-high 19 points at Quinnipiac, including a season-high five three-point field goals. The sharp-shooting Pistoljevic posted 11 double-figure scoring games last season.

Smith (7.3 points, 2.3 rebounds) started four of 30 games and averaged 3.8 points and 3.3 rebounds. He also posted a career-high 13 points against Radford last season.

Giles played in all 31 games while averaging 2.6 points, 1.7 rebounds, and 1.9 assists. He, too, scored a career-high 13 points a year ago at Howard, and dished out a career-high seven assists at Northern Colorado. Giles led the team in assists and steals six times each.

**Talented Newcomers**

Coach Gillian's third recruiting class includes another junior college transfer in Clayton Morgan (7.0 points, 5.7 rebounds), along with the already-mentioned true freshmen in Williams and Butler.

Morgan averaged a double-double of 18.4 points and 11.5 rebounds while earning All-Region XV honors at NJCAA Division III Fashion Institute (N.Y.).

Williams averaged 17.1 points and 7.6 rebounds at Woodlands (N.Y.) High School during his senior year.

Butler averaged 14.3 points at prep school Coastal Christian Academy in Virginia Beach last season while shooting 46% (83-181) on three-point field goals.

**Injuries Keep Three At Home**

Leland Beale, Chad Kosmo, and Jon Larson did not make the trip this weekend. Kosmo, a starter, has missed the past two games with an

**LONGWOOD UNIVERSITY  
VS. UMKC  
BY THE NUMBERS**

Category	LU	UMKC
Scoring Off.	76.8	63.7
Scoring Def.	74.2	62.0
Scoring Margin	+2.7	+1.7
Rebound Avg.	35.8	33.7
Rebound Margin	-2.3	-6.3
Off. Rebounds	13.3	11.3
Def. Rebounds	22.5	22.4
FG Percentage	44.3	40.1
3FG Percentage	33.6	24.1
3FGs Made	6.8	4.7
FT Percentage	68.4	76.5
FG% Defense	46.2	37.4
Assists	15.8	11.0
TO Margin	+4.0	+6.3
Blocks	2.3	6.0
Steals	9.5	9.7

**INDIVIDUAL LEADERS**

**Scoring Average**

Name	Points	Avg.
Michael Jefferson	86	14.3
Bryan Butler	73	12.2
Maurice Sumter	71	11.8

**Field Goal %**

Name	FG-A	FG%
Kirk Williams	19-32	.594
Dana Smith	17-29	.586
Lamar Barrett	20-42	.476

**Three-Point Field Goal %**

Name	3FG-A	3FG%
Dana Smith	5-8	.625
Bryan Butler	12-31	.387
Michael Jefferson	8-23	.348

**Free Throw %**

Name	FT-A	FT%
Michael Jefferson	20-22	.909
Bryan Butler	7-9	.778
Maurice Sumter	9-12	.750

**Rebounding Average**

Name	Rebounds	Avg.
Clayton Morgan	34	5.7
Maurice Sumter	32	5.3
Kirk Williams	27	4.5

**Assist Average**

Name	Assists	Avg.
Michael Jefferson	17	2.8
Brandon Giles	15	2.5
Maurice Sumter	14	2.3

**Steal Average**

Name	Steals	Avg.
Bryan Butler	14	2.3
Maurice Sumter	11	1.8
Michael Jefferson	10	1.7

**Block Average**

Name	Blocks	Avg.
Dana Smith	3	0.5
Maurice Sumter	3	0.5

**2005-06 UMKC NUMERICAL ROSTER**

No.	Name	Pos.	Yr.	Ht.	Wt.	Hometown
3	Dane Brumagin	G	Fr.	6-4	185	Montgomery City, Mo.
5	David Nurse	G	Fr.	6-2	190	Kearney, Mo.
11	Kalu Guasco	F	Sr.	6-8	245	Sao Paulo, Brazil
14	Alex Pledger	C	Fr.	7-1	235	Hamilton, New Zealand
15	Brent Stephens	F	So.	6-6	205	Jay, Okla.
21	Mark Huppe	G	Sr.	6-2	185	Overland Park, Kan.
22	Tim Blackwell	G	So.	6-4	185	Cameron, Mo.
23	Dee Ayuba	F	Jr.	6-6	210	Oklahoma City, Okla.
30	Jakub Jurczak	F	Fr.	6-9	205	Krosno, Poland
33	Brian Gettinger	F	Fr.	6-9	210	Overland Park, Kan.
44	Quinton Day	G	Jr.	6-1	175	Kansas City, Mo.
45	Blake Crawford	F	Jr.	6-8	225	Overland Park, Kan.
54	Kyle Spears	F	Jr.	6-9	245	Olathe, Kan.

**Head Coach:** Rich Zvosec

**Associate Head Coach:** Ken Dempsey

**Assistant Coach:** Jason Ivey

**Director of Basketball Operations:** Marek Zielinski (*Longwood, 2003*)

ankle injury suffered against UVA-Wise (Nov. 26), his first games missed as a Lancer since joining the program before last season (35/35).

Beale and Larson, both reserves, have yet to play this season due to back injuries. Beale had surgery in August, and is close to returning for Longwood, while Larson suffered an injury just prior to the the season opening last month.

**The 2005-06 Schedule**

The schedule is highlighted by games against #4 Villanova in Atlantic City, Virginia, Kansas State, VCU, Richmond, Nebraska, and Louisiana Tech. It is the first time the Lancers have ever faced Villanova, Virginia, VCU, Richmond, Kansas State, Nebraska, and La. Tech.

Longwood will play Villanova of the Big East Conference on December 10 at the historic Boardwalk Hall in Atlantic City, New Jersey. It will be a 7:30 p.m. tip-off against the Wildcats who advanced to last year's NCAA Tournament Sweet 16, losing by one point to eventual national champion North Carolina (67-66), and it will also be the first Division I men's basketball game in Atlantic City in nine years. The game has been arranged by the Atlantic City Convention & Visitors Authority, in conjunction with the New York-based Worldwide Marketing & Media Group.

The Lancers play at Virginia of the Atlantic Coast Conference (ACC) on February 15 at 7 p.m., at VCU of the Colonial Athletic Association (CAA) on December 22 at 7:30 p.m., at

Richmond of the Atlantic 10 Conference on January 2 at 4 p.m., and at Kansas State of the Big 12 on December 5 at 8 p.m..

**Gillian Names Junior Captains**

Coach Gillian named his captains for 2005-06: Michael Jefferson, Maurice Sumter, and Husein Pistoljevic. This will be Jefferson's third-straight year serving as a team captain and Sumter's second consecutive season as a team captain; Pistoljevic is a first-time team captain.

**Charting New Territory**

Longwood University is playing 30 Division I games for the second-straight year during 2005-06, and will face 15 institutions for the first-time ever. These include Nebraska (Nov. 18), Louisiana Tech (Nov. 19), Yale (Nov. 20), Kansas State (Dec. 5), #4 Villanova (Dec. 10), VCU (Dec. 22), College of Charleston (Dec. 29), Long Island (Dec. 30), Rider (Dec. 30), Richmond (Jan. 2), IPFW (Jan. 5 & Jan. 30), Savannah State (Jan. 21 & Feb. 25), North Carolina A&T (Feb. 2), Virginia (Feb. 15), and Hampton (Feb. 20).

**Pistoljevic In The Record Book**

Husein Pistoljevic made nine three-point field goals against Virginia Union on Feb. 5, 2004 at home to establish a new single-game record for three-pointers, also a Willett Hall-record.

For his career, Pistoljevic now totals 136 three-pointers to rank third all-time at Longwood.

**Longwood University**

Location ..... Farmville, Virginia  
 Founded ..... 1839  
 Enrollment ..... 4,350  
 Nickname ..... Lancers  
 Colors ..... Blue & White  
 Affiliation ... *Reclassifying Division I*  
 Conference ..... Independent  
 Facility ..... Willett Hall (2,522)  
 President ..... Dr. Patricia P. Cormier  
 Alma Mater ..... Boston University  
 Director of Athletics .. Rick Mazzuto  
 Alma Mater ..... Trinity (Conn.)  
 ..... (1971)  
 Athletics Phone ..... 434.395.2057

**Coaching Staff**

**Head Coach** ..... **Mike Gillian**  
 Alma Mater .....  
 ..... North Adams State (1986)  
 Career Record ..... 8-56 (2+)  
 Record At Longwood ..... 8-56 (2+)  
 Office Phone ..... 434.395.2838  
 E-Mail ..... gillianjm@longwood.edu  
 Best Time to Contact ..... Mornings  
 .... Coordinate Through Greg Prouty  
**Assistant Coach** ..... **Bill Reinson**  
 Alma Mater ..... Phoenix (2000)  
 Office Phone ..... 434.395.2891  
 E-Mail .... reinsonwf@longwood.edu  
**Assistant Coach** .... **Doug Thibault**  
 Alma Mater ..... Boise State (1998)  
 Office Phone ..... 434.395.2654  
 E-Mail ... thibaultde@longwood.edu  
**Assistant Coach** .... **Michael Huger**  
 Alma Mater ..... Bowling Green  
 ..... (1993)  
 Office Phone ..... 434.395.2733  
 E-Mail ..... hugerma@longwood.edu

**Team Information**

2004-05 Record ..... 1-30  
 Home Record ..... 1-10  
 Away Record ..... 0-16  
 Neutral Record ..... 0-4  
 Letterwinners Returning/Lost .....  
 ..... 11/3  
 Starters Returning/Lost ..... 4/1  
 Newcomers ..... 3

**Program History**

First Year ..... 1976  
 All-Time Record ..... 402-387  
 NCAA Tournament Appearances .....  
 ..... 4  
 Most Recent ..... 2001  
 .. Division II East Region Semifinals  
 ..... Queens (N.C.), L 77-76 OT

**Honors Candidate**

..... Michael Jefferson  
 .... 2005 All-Independent 2nd-Team

**2005-06 LONGWOOD UNIVERSITY  
INDIVIDUAL SUPERLATIVES**

**20-Point Games**

**Michael Jefferson (2)**

Date	Points	Opponent
11-19-05	26	Louisiana Tech
11-30-05	22	Liberty

**5-Assist Games**

**Brandon Giles (1)**

Date	Assists	Opponent
11-18-05	5	Nebraska

**Michael Jefferson (1)**

Date	Assists	Opponent
11-30-05	5	Liberty

**Maurice Sumter (1)**

Date	Assists	Opponent
11-20-05	5	Yale

**3-Steal Games**

**Bryan Butler (3)**

Date	Steals	Opponent
11-26-05	3	UVA-Wise
11-28-05	3	W&M
11-30-05	5	Liberty

**Maurice Sumter (3)**

Date	Steals	Opponent
11-20-05	3	Yale
11-26-05	3	UVA-Wise
11-28-05	3	W&M

**Michael Jefferson (2)**

Date	Steals	Opponent
11-28-05	3	W&M
11-30-05	3	Liberty

**Lamar Barrett (1)**

Date	Steals	Opponent
11-18-05	3	Nebraska

**Dana Smith (1)**

Date	Steals	Opponent
11-26-05	3	UVA-Wise

**2-Block Games**

**Chad Kosmo (1)**

Date	Blocks	Opponent
11-26-05	2	UVA-Wise

**Maurice Sumter (1)**

Date	Blocks	Opponent
11-20-05	2	Yale

**Roster Spans Six States**

Longwood University's 14-player roster features student-athletes from six states. The Commonwealth of Virginia leads the way with eight, including Leland Beale (Poquoson), Bryan Butler (Woodbridge), Darren Holmes (Virginia Beach), Michael Jefferson (Chesterfield), Jon Larson (Leesburg), Joel Rowe (Colonial Heights), Dana Smith (Woodbridge), and Maurice Sumter (Alexandria).

Other states represented include New York (two): Clayton Morgan (Brooklyn) and Kirk Williams (White Plains); Maine (one): Chad Kosmo (Northport); Maryland (one): Brandon Giles (Gaithersburg); Rhode Island (one): Lamar Barrett (Providence); and Washington (one): Husein Pistoljevic (Richland).

**This And That On The Lancers**

Longwood University junior Maurice Sumter graduated from T.C. Williams High School in Alexandria, Virginia -- that's the same high school made famous in the movie "Remember The Titans."

Junior Husein Pistoljevic was born in Bosnia and lived there for 11 years before moving to Washington state with his parents and an older brother.

Sophomore Lamar Barrett scored his 1,000th career point in high school on a set-play, designed by his St. Andrews (R.I.) School head coach Mike Hart, a play called "Longwood."

A cousin of junior Clayton Morgan is New York Yankee pitcher Tom Gordon.

**The Coaching Staff**

Third-year head coach Mike Gillian was previously an assistant at George Mason University under head coach Jim Larranaga from 1997-2003. He had also worked under Larranaga for one season at Bowling Green State (1996-97) prior to arriving at George Mason.

During Gillian's six seasons as an assistant coach at Mason, the Patriots went 100-74 overall, including a 66-34 CAA record, winning two CAA Tournament championships (1999, 2001) and two CAA regular season titles (1999, 2000). George Mason also earned two NCAA Tournament appearances (1999, 2001) and made one National Invitation Tournament (NIT) appearance (2002).

Coach Gillian's staff includes Bill Reinson, in his fourth year with the program, along with third-year staff member Doug Thibault and first-year

assistant Michael Huger. Huger played for Larranaga at BGSU (1989-93).

**Program Has Over 400 Wins**

Longwood University, competing in its 30th year, enters tonight's game with an overall record of 402-387 (.510). The Lancers have enjoyed 17 seasons at a .500 record or above, including four NCAA Tournament appearances (5-6 record - 1980, 1994, 1995, 2001). Longwood advanced to the Division III Final Four in 1980, and made three Division II Tournament appearances.

Seven former Longwood players have earned All-America honors, including one National Player of the Year, Colin Ducharme (2001). Ducharme is currently a graduate student at Massachusetts Institute of Technology (MIT) enrolled in its Leaders for Manufacturing Program working toward a dual masters degree in both business and engineering.

The Lancers also boast one former player who played in the NBA as Jerome Kersey (1980-84) spent 17 years in the league, 11 with the Portland Trail Blazers. Kersey spent 2004-05 as an assistant coach with the Milwaukee Bucks.

**How Times Have Changed**

Amazing how things have changed at Longwood University, located in historic Farmville, Virginia (population 6,500), approximately 65 miles west of Richmond. Founded in 1839 as the Farmville Female Seminary Association, the commonwealth acquired the school in 1884 and it became the first state institution of higher learning for women in Virginia, eventually becoming fully coeducational in 1976.

Presently, Longwood has a combined undergraduate and graduate enrollment of 4,350 and best of all, the Lancers have an intercollegiate athletics program on the cusp of Division I certification.

## Longwood University Head Coach Mike Gillian

Longwood University named Mike Gillian as the seventh head coach in the history of men's basketball at the institution on May 2, 2003. Coach Gillian, in his third year during 2005-06, is charged with building an NCAA Division I program, and has been doing so from the ground up during his first two seasons while compiling a record of 6-52. The program begins this season with 11 scholarship players and four returning starters among 11 letterwinners on the 14-player roster.

Longwood finished 1-30 during 2004-05, year two of the University's *Division I Reclassification* and first year playing a full Division I schedule. The Lancers competed with nine scholarship players, no seniors, and 13 freshmen and sophomores on the 14-player roster. Longwood was 5-22 during 2003-04, year one of the transition while competing with seven scholarship players and only four returning letterwinners on the 14-player roster. That team was depleted even further at mid-season with the loss of the team's leading scorer.

Prior to his arrival at Longwood, Coach Gillian had been an assistant coach at George Mason University under head coach Jim Larranaga from 1997-2003. He had also worked under Larranaga for one season at Bowling Green State (Ohio) University (1996-97) before going to George Mason with Larranaga.

"Mike brings an excellent Division I background to our University," explained Director of Athletics Rick Mazzuto. "He has worked with an outstanding head coach in Jim Larranaga and is ready to move the Longwood program forward."

During Gillian's six seasons as an assistant coach at Mason, the Patriots went 100-74 overall with a 66-34 Colonial Athletic Association (CAA) record, winning two CAA Tournament championships (1999, 2001) and two CAA regular season titles (1999, 2000). George Mason also earned two NCAA Tournament appearances (1999, 2001) and made one National Invitation Tournament (NIT) appearance (2002). The Patriots were 57-18 overall at home in the Patriot Center, posting a 41-8 CAA homecourt record.

At Bowling Green, the Falcons finished 22-10 while winning the 1997 Mid-American Conference regular season title (13-5) and earning an NIT appearance.

"I'm very excited and would like to thank President Cormier (Dr. Patricia P. Cormier) and Rick Mazzuto for the opportunity to be the head basketball coach here at Longwood University," said Gillian. "It's been a long-time goal of mine to be a head coach, and to do so at the highest level. At Longwood, it's exciting to be leading a program through the transition to Division I status.

"The leadership and direction of the Division I transition plan at Longwood, as established by Dr. Cormier and Rick Mazzuto, is outstanding. Their unique insight and involvement has made being here a natural fit for me, and I look forward to the challenges ahead.

"I will certainly draw upon the experience of working with Jim Larranaga, and at George Mason University, to establish a successful Division I men's basketball tradition at Longwood."

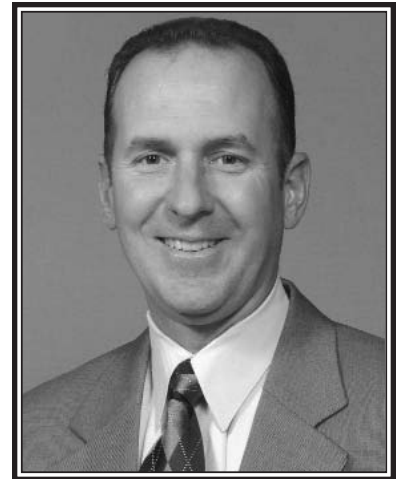
Prior to joining Larranaga at BGSU, Gillian was an assistant coach at Division II American International (Mass.) from 1989-95. During that six-year stint working for current Indiana Pacers assistant coach Jim Powell, the Yellow Jackets went 117-58 overall with a 75-33 Northeast-10 Conference (NE-10) record, winning both the NE-10 regular season and tournament championships in 1994 (26-6). American International also advanced to the second-round of the Division II Tournament that year.

Gillian was a member of the National Association of Basketball Coaches (NABC) "Assistant Coaches Committee" from 1999-2003. He was a YES Clinic speaker at the Division I Men's Final Four from 1998-2000, and has extensive public speaking experience through his involvement with numerous booster, local business and civic organizations, and charity

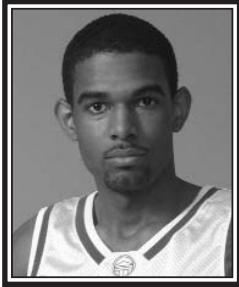
events.

Gillian was a four-year letterwinner as an undergraduate at Division III North Adams State (now the Massachusetts College of Liberal Arts), and served as a team captain during his final two years. He received a bachelor of science degree in business administration from North Adams State, and earned a master of business administration degree from American International.

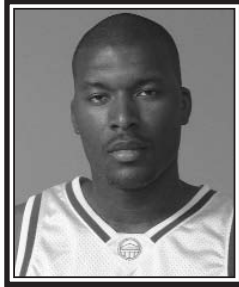
A native of Ayer, Massachusetts, Gillian (41) and his wife, Janet, have a four-year-old daughter, Emma.



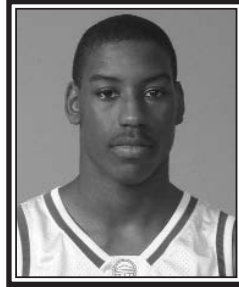
## 2005-06 Longwood University Photo Roster



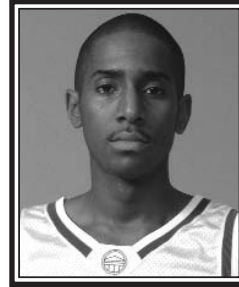
**00 Darren Holmes**  
F, Jr., 6-6, 215  
Virginia Beach, Va.



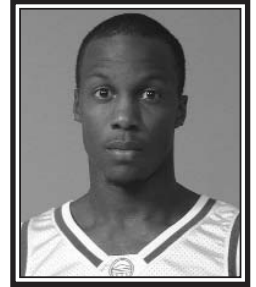
**1 Clayton Morgan**  
F, Jr., 6-7, 230  
Brooklyn, N.Y.



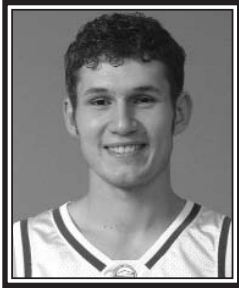
**3 Kirk Williams**  
F, Fr., 6-6, 180  
White Plains, N.Y.



**10 Brandon Giles**  
G, So., 5-10, 150  
Gaithersburg, Md.



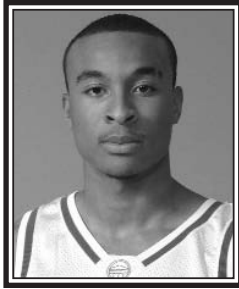
**12 Bryan Butler**  
G, Fr., 6-0, 170  
Woodbridge, Va.



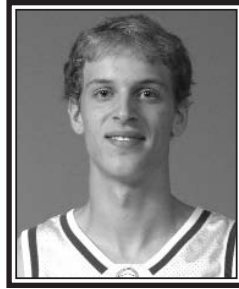
**15 Joel Rowe**  
G, Jr., 6-1, 190  
Colonial Heights, Va.



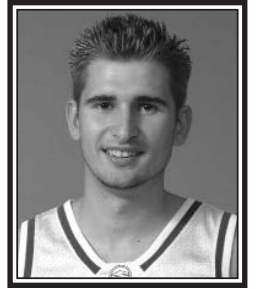
**20 Michael Jefferson**  
G, Jr., 6-3, 200  
Chesterfield, Va.



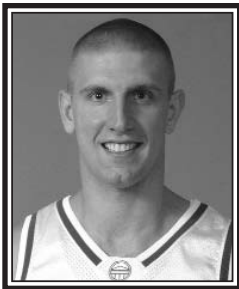
**22 Dana Smith**  
G-F, So., 6-5, 225  
Woodbridge, Va.



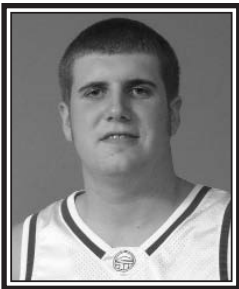
**30 Jon Larson**  
F, R-Jr., 6-6, 190  
Leesburg, Va.



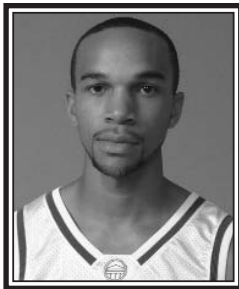
**32 Husein Pistoljevic**  
G, Jr., 6-2, 185  
Richland, Wash.



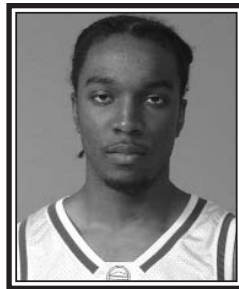
**42 Chad Kosmo**  
C, Sr., 6-11, 260  
Northport, Maine



**44 Leland Beale**  
F-C, Jr., 6-8, 255  
Poquoson, Va.



**45 Maurice Sumter**  
G-F, Jr., 6-5, 180  
Alexandria, Va.



**50 Lamar Barrett**  
F, So., 6-6, 190  
Providence, R.I.



**Head Coach**  
Mike Gillian



**Assistant Coach**  
Bill Reinson



**Assistant Coach**  
Doug Thibault



**Assistant Coach**  
Michael Huger

## NCAA DIVISION I RECLASSIFICATION TIMELINE

Longwood University President **Dr. Patricia P. Cormier** informed the NCAA in a letter dated November 12, 2002 of Longwood's intention to reclassify its intercollegiate athletic program to Division I status. By doing so, the institution began an NCAA-mandated five-year process, including a one-year "exploratory period" (2002-03), to change its membership from Division II to Division I.

The decision to move to Division I is part of Longwood's overall strategic plan to raise the visibility and profile of the University. According to President Cormier, "We believe that Division I status will enhance both our institutional image and our recruitment efforts. And we think our student-athletes deserve to play at that level. We look forward to developing some great rivalries."

Those sentiments are shared by Longwood Director of Athletics **Rick Mazzuto** who stated, "One of the tremendous positives generated out of moving to Division I is the opportunity to use intercollegiate athletics as a vehicle to raise the public profile of the institution. The increased opportunities to play other high profile educational institutions, and to travel to major metropolitan areas where they are located, will greatly benefit Longwood -- in terms of more media interest and visibility."

<b>2003-04</b> <i>Reclassification Year</i> <b>One</b> <b>20.5.2.2.2</b>	<b>2004-05</b> <i>Reclassification Year</i> <b>Two</b> <b>20.5.2.2.3</b>	<b>2005-06</b> <i>Reclassification Year</i> <b>Three</b> <b>20.5.2.2.4</b>	<b>2006-07</b> <i>Reclassification Year</i> <b>Four</b> <b>20.5.2.2.5</b>
<p><b>(a)</b> Compliance with all minimum contests and participation requirements for sports sponsorship as set forth in Bylaw 20.9.3.3.</p> <p><b>(b)</b> Submit a strategic plan based on feedback from the previous plan.</p> <p><b>(c)</b> Apply Division I legislation to the greatest extent possible.</p> <p><b>(d)</b> Attendance at the NCAA Convention by required institutional representatives.</p> <p><b>(e)</b> Attendance at an orientation session conducted by the national office by required institutional representatives related to the application Division I legislation and issues impacting Division I.</p> <p><b>(f)</b> Submit an annual report and updated strategic plan by June 30 based on feedback from the previous year's annual report.</p>	<p><b>(a)</b> Full compliance with all Division I legislation and membership requirements.</p> <p><b>(b)</b> Attendance at the NCAA Convention by required institutional representatives.</p> <p><b>(c)</b> Attendance at a meeting to be conducted at the NCAA Convention by required institutional representatives to discuss issues impacting Division I members.</p> <p><b>(d)</b> Submit an annual report and updated strategic plan by June 30 based on feedback received from the previous year's annual report.</p>	<p><b>(a)</b> Attendance at the NCAA Convention by required institutional representatives.</p> <p><b>(b)</b> Attendance at a meeting to be conducted at the NCAA Convention by required institutional representatives to discuss issues impacting Division I members.</p> <p><b>(c)</b> Completion of an NCAA athletics certification orientation visit.</p> <p><b>(d)</b> Completion of a compliance review conducted by the national office and submission of a report with an institutional response to findings.</p> <p><b>(e)</b> Submit an annual report and updated strategic plan by June 30 based on feedback received from the previous year's annual report.</p>	<p><b>(a)</b> Successfully complete an NCAA athletics certification self-study and evaluation visit.</p> <p><b>(b)</b> Attendance at the NCAA Convention by required institutional representatives.</p> <p><b>(c)</b> Attendance at a meeting conducted at the NCAA Convention by required institutional representatives to discuss issues impacting Division I members.</p> <p><b>(d)</b> Submit an annual report and updated strategic plan by June 30 based on feedback received from the previous year's annual report.</p> <p style="text-align: center;"><b>2007-08</b> <b>First Year Of Division I</b> <b>20.5.3</b></p> <p><b>(a)</b> Longwood shall comply with all NCAA championships eligibility requirements.</p> <p><b>(b)</b> The Lancers shall be eligible for participation in NCAA championships.</p>

2005-06 Longwood Men's Basketball  
 Longwood Combined Team Statistics (as of Dec 01, 2005)  
 All games

<b>RECORD:</b>	<b>OVERALL</b>	<b>HOME</b>	<b>AWAY</b>	<b>NEUTRAL</b>
<b>ALL GAMES.....</b>	<b>(2-4)</b>	<b>(2-1)</b>	<b>(0-1)</b>	<b>(0-2)</b>
<b>CONFERENCE.....</b>	<b>(0-0)</b>	<b>(0-0)</b>	<b>(0-0)</b>	<b>(0-0)</b>
<b>NON-CONFERENCE.....</b>	<b>(2-4)</b>	<b>(2-1)</b>	<b>(0-1)</b>	<b>(0-2)</b>

## Player	GP-GS	Min--Avg	---TOTAL---		---3-PTS---		FT-FTA	Pct	---REBOUNDS---				PF	FO	A	TO	Blk	Stl	Pts	Avg
			FG-FGA	Pct	3FG-FGA	Pct			Off	Def	Tot	Avg								
20 Jefferson, Michael.	6-6	177 29.5	29-71	.408	8-23	.348	20-22	.909	5	10	15	2.5	12	0	17	15	1	10	86	14.3
12 Butler, Bryan.....	6-6	138 23.0	27-61	.443	12-31	.387	7-9	.778	4	13	17	2.8	10	0	13	17	0	14	73	12.2
45 Sumter, Maurice....	6-6	190 31.7	29-69	.420	4-17	.235	9-12	.750	8	24	32	5.3	15	0	14	16	3	11	71	11.8
03 Williams, Kirk....	6-0	100 16.7	19-32	.594	0-0	.000	15-25	.600	16	11	27	4.5	19	2	3	7	1	5	53	8.8
22 Smith, Dana.....	6-0	100 16.7	17-29	.586	5-8	.625	6-11	.545	5	12	17	2.8	20	3	6	9	3	4	45	7.5
50 Barrett, Lamar....	6-6	138 23.0	20-42	.476	1-6	.167	4-8	.500	15	5	20	3.3	13	0	12	6	2	8	45	7.5
01 Morgan, Clayton....	6-2	136 22.7	14-36	.389	3-8	.375	11-15	.733	9	25	34	5.7	13	1	7	9	2	3	42	7.0
32 Pistoljevic, Husein	5-0	56 11.2	6-15	.400	4-12	.333	2-2	1.000	0	3	3	0.6	3	0	2	4	0	1	18	3.6
42 Kosmo, Chad.....	4-4	54 13.5	4-10	.400	0-0	.000	2-8	.250	3	15	18	4.5	10	0	4	7	2	1	10	2.5
10 Giles, Brandon....	6-0	87 14.5	3-15	.200	3-14	.214	2-2	1.000	0	7	7	1.2	14	0	15	4	0	0	11	1.8
00 Holmes, Darren....	3-0	10 3.3	2-3	.667	0-0	.000	0-0	.000	1	2	3	1.0	6	1	0	2	0	0	4	1.3
15 Rowe, Joel.....	3-0	14 4.7	1-3	.333	1-3	.333	0-0	.000	0	0	0	0.0	3	0	2	1	0	0	3	1.0
TEAM.....										14	8	22	3.7	0		1				
Total.....	6	1200	171-386	.443	41-122	.336	78-114	.684	80	135	215	35.8	138	7	95	98	14	57	461	76.8
Opponents.....	6	1200	157-340	.462	27-80	.338	104-153	.680	78	151	229	38.2	114	1	77	122	12	43	445	74.2

TEAM STATISTICS	LU	OPP	DATE	OPPONENT	W/L	SCORE	ATTEND
SCORING.....	461	445	*11-18-05	at Nebraska	L	65-80	8139
Points per game.....	76.8	74.2	*11-19-05	vs Louisiana Tech	L	73-83	8114
Scoring margin.....	+2.7	-	*11-20-05	vs Yale	L	67-70	8125
FIELD GOALS-ATT.....	171-386	157-340	11-26-05	VIRGINIA-WISE	W	93-49	257
Field goal pct.....	.443	.462	11-28-05	WILLIAM AND MARY	L	75-88	1528
3 POINT FG-ATT.....	41-122	27-80	11-30-05	LIBERTY	W	88-75	1430
3-point FG pct.....	.336	.338	* = John Thompson Foundation Challenge				
3-pt FG made per game..	6.8	4.5					
FREE THROWS-ATT.....	78-114	104-153					
Free throw pct.....	.684	.680					
REBOUNDS.....	215	229					
Rebounds per game.....	35.8	38.2					
Rebounding margin.....	-2.3	-					
ASSISTS.....	95	77					
Assists per game.....	15.8	12.8					
TURNOVERS.....	98	122					
Turnovers per game....	16.3	20.3					
Turnover margin.....	+4.0	-					
Assist/turnover ratio..	1.0	0.6					
STEALS.....	57	43					
Steals per game.....	9.5	7.2					
BLOCKS.....	14	12					
Blocks per game.....	2.3	2.0					
WINNING STREAK.....	1	-					
Home win streak.....	1	-					
ATTENDANCE.....	3215	24378					
Home games-Avg/Game....	3-1072	1-8139					
Neutral site-Avg/Game..	-	2-8120					

SCORE BY PERIODS:	1st	2nd	Total
Longwood.....	225	236	- 461
Opponents.....	207	238	- 445

2005-06 Longwood Men's Basketball  
 Longwood Extended Season Box Score (as of Dec 01, 2005)  
 All games

<b>RECORD:</b>	<b>OVERALL</b>	<b>HOME</b>	<b>AWAY</b>	<b>NEUTRAL</b>
<b>ALL GAMES.....</b>	<b>(2-4)</b>	<b>(2-1)</b>	<b>(0-1)</b>	<b>(0-2)</b>
<b>CONFERENCE.....</b>	<b>(0-0)</b>	<b>(0-0)</b>	<b>(0-0)</b>	<b>(0-0)</b>
<b>NON-CONFERENCE.....</b>	<b>(2-4)</b>	<b>(2-1)</b>	<b>(0-1)</b>	<b>(0-2)</b>

## Player	GP-GS	Min--Avg	---TOTAL---		-----3-PTS-----			----REBOUNDS----																		
			FG-FGA	Pct	3FG-FGA	Pct	3FG/G	FT-FTA	Pct	Off	Def	Tot	Avg	PF	FO	A	APG	TO	TOPG	A/TO	Blk	BPG	Stl	SPG	Pts	Avg
20 Jefferson, Michael.	6-6	177 29.5	29-71	.408	8-23	.348	1.33	20-22	.909	5	10	15	2.5	12	0	17	2.83	15	2.50	1.13	1	0.17	10	1.67	86	14.3
12 Butler, Bryan.....	6-6	138 23.0	27-61	.443	12-31	.387	2.00	7-9	.778	4	13	17	2.8	10	0	13	2.17	17	2.83	0.76	0	0.00	14	2.33	73	12.2
45 Sumter, Maurice....	6-6	190 31.7	29-69	.420	4-17	.235	0.67	9-12	.750	8	24	32	5.3	15	0	14	2.33	16	2.67	0.88	3	0.50	11	1.83	71	11.8
03 Williams, Kirk.....	6-0	100 16.7	19-32	.594	0-0	.000	0.00	15-25	.600	16	11	27	4.5	19	2	3	0.50	7	1.17	0.43	1	0.17	5	0.83	53	8.8
22 Smith, Dana.....	6-0	100 16.7	17-29	.586	5-8	.625	0.83	6-11	.545	5	12	17	2.8	20	3	6	1.00	9	1.50	0.67	3	0.50	4	0.67	45	7.5
50 Barrett, Lamar.....	6-6	138 23.0	20-42	.476	1-6	.167	0.17	4-8	.500	15	5	20	3.3	13	0	12	2.00	6	1.00	2.00	2	0.33	8	1.33	45	7.5
01 Morgan, Clayton....	6-2	136 22.7	14-36	.389	3-8	.375	0.50	11-15	.733	9	25	34	5.7	13	1	7	1.17	9	1.50	0.78	2	0.33	3	0.50	42	7.0
32 Pistoljevic, Husein	5-0	56 11.2	6-15	.400	4-12	.333	0.80	2-2	1.000	0	3	3	0.6	3	0	2	0.40	4	0.80	0.50	0	0.00	1	0.20	18	3.6
42 Kosmo, Chad.....	4-4	54 13.5	4-10	.400	0-0	.000	0.00	2-8	.250	3	15	18	4.5	10	0	4	1.00	7	1.75	0.57	2	0.50	1	0.25	10	2.5
10 Giles, Brandon.....	6-0	87 14.5	3-15	.200	3-14	.214	0.50	2-2	1.000	0	7	7	1.2	14	0	15	2.50	4	0.67	3.75	0	0.00	0	0.00	11	1.8
00 Holmes, Darren.....	3-0	10 3.3	2-3	.667	0-0	.000	0.00	0-0	.000	1	2	3	1.0	6	1	0	0.00	2	0.67	0.00	0	0.00	0	0.00	4	1.3
15 Rowe, Joel.....	3-0	14 4.7	1-3	.333	1-3	.333	0.33	0-0	.000	0	0	0	0.0	3	0	2	0.67	1	0.33	2.00	0	0.00	0	0.00	3	1.0
TEAM.....										14	8	22	3.7	0				1								
Total.....	6	1200	171-386	.443	41-122	.336	6.83	78-114	.684	80	135	215	35.8	138	7	95	15.83	98	16.33	0.97	14	2.33	57	9.50	461	76.8
Opponents.....	6	1200	157-340	.462	27-80	.338	4.50	104-153	.680	78	151	229	38.2	114	1	77	12.83	122	20.33	0.63	12	2.00	43	7.17	445	74.2

<b>SCORE BY PERIODS:</b>	<b>1st</b>	<b>2nd</b>	<b>Total</b>	<b>DEADBALL REBOUNDS:</b>	<b>OFF</b>	<b>DEF</b>	<b>TOTAL</b>
-----	-----	-----	-----	-----	-----	-----	-----
Longwood.....	225	236	- 461	Longwood.....	20	0	20
Opponents.....	207	238	- 445	Opponents.....	19	0	19

2005-06 Longwood Men's Basketball  
 Longwood Season Schedule/Results & Leaders (as of Dec 01, 2005)  
 All games

<b>RECORD:</b>	<b>OVERALL</b>	<b>HOME</b>	<b>AWAY</b>	<b>NEUTRAL</b>
<b>ALL GAMES.....</b>	<b>(2-4)</b>	<b>(2-1)</b>	<b>(0-1)</b>	<b>(0-2)</b>
<b>CONFERENCE.....</b>	<b>(0-0)</b>	<b>(0-0)</b>	<b>(0-0)</b>	<b>(0-0)</b>
<b>NON-CONFERENCE.....</b>	<b>(2-4)</b>	<b>(2-1)</b>	<b>(0-1)</b>	<b>(0-2)</b>

DATE	TIME	OPPONENT	SCORE	ATTEND	HIGH POINTS	HIGH REBOUNDS
11-18-05	7:05 p.m.	* at Nebraska	65-80	L 8139	(17)Sumter, Maurice	(6)Williams, Kirk
11-19-05	6:05 p.m.	* vs Louisiana Tech	73-83	L 8114	(26)Jefferson, Michael	(8)Sumter, Maurice
11-20-05	1 p.m.	* vs Yale	67-70	L 8125	(11)Sumter, Maurice	(9)Kosmo, Chad
11-26-05	3 p.m.	VIRGINIA-WISE	W 93-49	257	(15)Smith, Dana	(9)Williams, Kirk
						(9)Smith, Dana
11-28-05	7 p.m.	WILLIAM AND MARY	75-88	L 1528	(16)Jefferson, Michael	(9)Morgan, Clayton
11-30-05	7 p.m.	LIBERTY	W 88-75	1430	(22)Jefferson, Michael	(9)Sumter, Maurice

\* = John Thompson Foundation Challenge

ATTENDANCE SUMMARY	GAMES	TOTALS	AVG/GAME
HOME.....	3	3215	1072
AWAY.....	1	8139	8139
NEUTRAL.....	2	16239	8120
TOTAL.....	6	27593	4599



## Longwood beats Liberty for second Division I victory

By Chris Lang  
Lynchburg News & Advance  
Thursday, December 1, 2005

FARMVILLE - The indignity of losing badly to what was one of major college basketball's worst programs a year ago was bad enough for Liberty University's basketball players Wednesday night. The taunting just made it worse.

"You are flamers!" a rowdy group of Longwood University students screamed during a second-half timeout. It was an altogether strange feeling for these fans, so accustomed to watching losses pile up at Willett Hall. Instead, they reveled in the Lancers' easy 88-75 victory against the Flames.

Only once since starting the four-year process of jumping from Division II to Division I had Longwood beaten a fellow DI school, rallying to top Howard here last December. Longwood, which was 1-30 last season, lost its next 23 games against Division I opponents before whipping the Flames.

"We were ready," Longwood coach Mike Gillian said.

And Liberty most certainly was not. Five nights ago at Rupp Arena, the Flames battled seventh-ranked Kentucky hard for a half and only trailed by nine at halftime.

Longwood (2-4) outworked and outmuscled Liberty (1-3) from the start and took a double-digit lead 12 minutes into the game. The Flames never pulled within single digits.

"There's so much inexperience in our group," Liberty coach Randy Dunton said. "I think they have a picture of what it takes to go to war and compete in a basketball game, and it's not accurate. You learn that through experience."

Michael Jefferson led the Lancers with 22 points, five assists and six rebounds. He was nearly unstoppable, even taking Liberty guard Larry Blair one-on-one and blowing past him for two first-half baskets. When Kirk Williams, who had 17 points, scored a basket and converted a foul shot with 1:46 left in the first half to put the Lancers ahead 42-21, Jefferson said he could sense the buzz in the building.

The fans were loud and appreciative. The Lancers had come to the gym ready, and they delivered a rousing performance.

"We're going to win!" one stunned student shrieked.

"Let's not say that yet," another warned.

There was nothing to worry about. Liberty didn't put up much of a fight. The Flames allowed 12 offensive rebounds and turned the ball over 21 times. There were stretches of 4:51 and 5:52 in the first half in which Liberty didn't score. The Flames coughed it up on six straight first-half possessions as Longwood seized the momentum and put the game out of reach.

Longwood scored 29 points off Liberty's turnovers. Blair attributed it to poor effort, and he hoped the ugly defeat would be an eye-opener for his team heading into Friday's game at Vines Center against Lynchburg College.

"Anytime you can't get loose balls, that's (poor) effort," Blair said. "It's nothing more than that. No excuses."

Last year, Longwood led at halftime only five times, never by more than six points. It lost four of those games. One had to wonder how the Lancers would handle a 19-point halftime edge.

They did just fine as Liberty continued to stumble over itself. Flames forward Jeremy Eck shot an air ball three feet from the basket and later missed a wide-open layup, prompting the students to taunt "we want Jeremy!" every time he went to the bench.

Then, disaster nearly struck for Liberty.

With 7:08 left, Blair crumpled to the floor in pain, screaming and holding his left leg. His calf had cramped up severely ("yeah, real severe," he said), and when he hit the floor, he opened a cut in the back of his head that left blood on the court and required bandaging on the bench.

Blair, who led the Flames with 16 points, said he was fine and added he expects to play Friday. Eric Bigby scored 13 points and Evan Risher added 12 for the Flames. Bryan Butler and Maurice Sumter scored 15 apiece for Longwood. Clayton Morgan (12 points) was the fifth Lancer in double figures.

Two random fans from the crowd of 1,430 stormed the court after the final buzzer and celebrated with Lancers players. It might have been a strange feeling for a program in transition, but it's one Longwood players can get used to.

"It's quite a difference between last year and this year," Jefferson said. "I like it."

**This story can be found at:**

[http://www.newsadvance.com/servlet/Satellite?pagename=LNA%2FMGArticle%2FLNA\\_BasicArticle&c=MGArticle&cid=1128768458251&path=!sports](http://www.newsadvance.com/servlet/Satellite?pagename=LNA%2FMGArticle%2FLNA_BasicArticle&c=MGArticle&cid=1128768458251&path=!sports)

[Go Back](#)

Official Basketball Box Score -- GAME TOTALS -- FINAL STATISTICS

Liberty vs Longwood

11-30-05 7 p.m. at Farmville, Virginia (Willett Hall)

VISITORS: Liberty 1-3

##	Player Name	TOT-FG			3-PT			REBOUNDS			PF	TP	A	TO	BLK	S	MIN
		FG	-FGA	FGA	FGA	FT	-FTA	OF	DE	TOT							
04	BIGBY, Eric..... *	6	-7	0	-0	1	-2	1	2	3	3	13	0	3	0	0	17
11	HUBBARD, Damien..... *	4	-9	0	-3	1	-2	0	6	6	2	9	6	4	1	0	40
22	BLAIR, Larry..... *	6	-13	1	-3	3	-4	0	0	0	1	16	0	1	0	2	28
30	MONROE, Russell..... *	4	-8	0	-0	2	-2	1	3	4	2	10	0	1	2	0	18
33	PORTER, Rell..... *	2	-4	0	-2	0	-0	0	4	4	5	4	0	4	0	0	29
01	BARRY, Muhammad.....	0	-0	0	-0	0	-0	0	0	0	1	0	0	0	0	0	4
02	RISHER, Evan.....	5	-8	2	-3	0	-1	0	2	2	3	12	2	4	0	3	23
05	SMITH, Anthony.....	2	-4	0	-1	2	-2	1	1	2	3	6	2	1	0	3	24
21	ECK, Jeremy.....	1	-3	0	-0	0	-0	0	2	2	4	2	0	1	0	0	11
32	SHORTS, Lamarr.....	0	-0	0	-0	1	0	1	0	1	1	0	0	0	0	1	1
44	STEWART, Doug.....	1	-2	1	-2	0	-0	1	0	1	0	3	0	2	0	0	5
	TEAM.....					2	1	3									
	Totals.....	31	-58	4	-14	9	-13	7	21	28	25	75	10	21	3	9	200

TOTAL FG% 1st Half: 11-24 45.8%      2nd Half: 20-34 58.8%      Game: 53.4%      DEADB  
 3-Pt. FG% 1st Half: 0-6 0.0%      2nd Half: 4-8 50.0%      Game: 28.6%      REBS  
 F Throw % 1st Half: 3-4 75.0%      2nd Half: 6-9 66.7%      Game: 69.2%      2

HOME TEAM: Longwood 2-4

##	Player Name	TOT-FG			3-PT			REBOUNDS			PF	TP	A	TO	BLK	S	MIN
		FG	-FGA	FGA	FGA	FT	-FTA	OF	DE	TOT							
01	Morgan, Clayton..... *	3	-6	0	-1	6	-7	3	4	7	2	12	1	2	0	0	31
12	Butler, Bryan..... *	4	-7	2	-3	5	-6	0	3	3	2	15	3	1	0	5	27
20	Jefferson, Michael.. *	7	-14	1	-2	7	-8	2	4	6	2	22	5	4	0	3	37
45	Sumter, Maurice..... *	6	-12	0	-0	3	-4	2	7	9	1	15	0	4	0	0	34
50	Barrett, Lamar..... *	2	-7	0	-0	0	-0	1	0	1	2	4	1	1	0	2	23
03	Williams, Kirk.....	7	-9	0	-0	3	-6	1	2	3	3	17	0	0	0	1	17
10	Giles, Brandon.....	0	-0	0	-0	2	-2	0	0	0	2	2	3	0	0	0	14
22	Smith, Dana.....	0	-5	0	-1	1	-2	0	1	1	3	1	0	3	0	0	17
	TEAM.....					3	1	4									
	Totals.....	29	-60	3	-7	27	-35	12	22	34	17	88	13	15	0	11	200

TOTAL FG% 1st Half: 16-34 47.1%      2nd Half: 13-26 50.0%      Game: 48.3%      DEADB  
 3-Pt. FG% 1st Half: 3-5 60.0%      2nd Half: 0-2 0.0%      Game: 42.9%      REBS  
 F Throw % 1st Half: 9-13 69.2%      2nd Half: 18-22 81.8%      Game: 77.1%      6

Officials: Joey Caruthers, Tim Comer, Mike Cowart  
 Technical fouls: Liberty-None. Longwood-Williams, Kirk.  
 Attendance: 1430

Score by Periods	1st	2nd	Total
Liberty.....	25	50	- 75
Longwood.....	44	44	- 88

Longwood playing Liberty for first time since Feb. 8, 1988  
 Points in the paint-LIB 36,LU 42. Points off turnovers-LIB 14,LU 29.  
 2nd chance points-LIB 7,LU 11. Fast break points-LIB 0,LU 0.  
 Bench points-LIB 23,LU 20. Score tied-4 times. Lead changed-2 times.  
 Last FG-LIB 2nd-00:00, LU 2nd-03:57.

## Cofield's 21 spark Tribe's victory

**Longwood scores 48 in the second half to help keep game close**

BY JOHN PACKETT

TIMES-DISPATCH STAFF WRITER

Tuesday, November 29, 2005

### W&M 88 LONGWOOD 75

FARMVILLE - Longwood University is in the third year of a four-year reclassification process in moving from Division II to Division I. William and Mary has been at the highest level for a long time.

So it wasn't surprising that the Tribe beat the Lancers 88-75 last night. But W&M coach Tony Shaver couldn't breathe easy until Adam Payton buried a 3-pointer from the right wing with 1:12 left in front of 1,528 at Willett Hall.

That gave the Tribe an 86-73 advantage and assured W&M of its fourth win in five outings.

"We couldn't buckle down defensively," Shaver said. "If we could have made one or two more stops, we could have had more of a working margin. Forty-eight second-half points [by Longwood], that's a lot of points. We allowed them to get into a rhythm.

"But I'm not going to complain about a 13-point win on the road. We've already won twice as many on the road this year as we did all last year [when the Tribe was 1-12 away from home]."

Junior Corey Cofield came off the bench to lead the Tribe with 21 points and seven rebounds. Vanderbilt transfer Adam Payton and sophomore Laimis Kisielius each scored 19 points as W&M built a 19-point second-half bulge.

But a balanced attack allowed the Lancers (1-4) to climb back in it and get as close as eight points on a three-point play by Maurice Sumter with 2:07 remaining. W&M scored the next seven points to remove any suspense, which was a far cry from last year's 90-60 romp in Williamsburg.

"We've certainly come a long way in the process and have a ways to go, but we are significantly better than we were a year ago," Longwood coach Mike Gillian said. "The evidence for me comes in the level of effort and intensity that we're getting out of our entire group night after night."

A 22-1 run by W&M turned a 10-4 Longwood lead into a 26-11 deficit midway through the first half. But the Lancers battled back to 31-27 before the Tribe reeled off the final 10 points of the half to take a 41-27 spread into the break.

Payton, who sat out last season under NCAA transfer rules, scored 14 of his points before intermission.

"I'm getting more comfortable every day, every practice," said the junior guard, who hit 7 of 8 shots from the floor.

Cofield, a starter most of his career, hasn't started the Tribe's two most recent games but turned in his season-high in scoring.

"Corey is a great kid and he's been a good player, but we've got to get him to play a good all-around game," Shaver said. "He hadn't done that earlier in the season, although tonight was his best all-around game of the season. He played very good defensively."

Former Meadowbrook High standout Michael Jefferson led five Lancers in double figures with 16 points, and Bryan Butler added 15.

Contact John Packett at (804) 649-6313 or [jpacket@timesdispatch.com](mailto:jpacket@timesdispatch.com)

### WILLIAM & MARY (4-1)

Baker 3-11 1-4 8, Smith 2-4 2-2 6, Hutt 0-1 1-2 1, Kisielius 5-12 7-8 19, Payton 7-8 3-3 19, Loehrke 0-0 0-0 0, Mann 2-6 2-2 8, Stein 1-2 0-0 2, Smith III 0-0 0-0 0, Mokris 0-1 0-0 0, Darnell 2-4 0-0 4, Cofield 7-11 7-8 21. Totals 29-60 23-29 88.

### LONGWOOD (1-4)

Morgan 3-8 3-5 10, Butler 6-10 0-0 15, Jefferson 6-14 3-4 16, Sumter 4-11 3-4 11, Barrett 6-12 1-1 13, Williams 1-4 1-2 3, Giles 0-1 0-0 0, Smith 3-3 1-2 7, Pistoljevic 0-0 0-0 0. Totals 29-63 12-18 75.

Halftime - William & Mary 41-27. 3-point goals - William & Mary 7-16 (Payton 2-2, Mann 2-3, Kisielius 2-7, Baker 1-3, Darnell 0-1), Longwood 5-18 (Butler 3-6, Morgan 1-1, Jefferson 1-4, Giles 0-1, Sumter 0-3, Barrett 0-3).

Fouled Out - Morgan, Smith, Williams. Rebounds - William & Mary 44 (Cofield 7), Longwood 28 (Morgan 9). Assists - William & Mary 19 (Baker, Kisielius 4), Longwood 9 (Barrett 3). Total Fouls - William & Mary 21, Longwood 23. A - 1,528.

**This story can be found at:** [http://www.timesdispatch.com/servlet/Satellite?pagename=RTD%2FMGArticle%2FRTD\\_BasicArticle&c=MGArticle&cid=1128768408958&path=%21sports&s=1045855934844](http://www.timesdispatch.com/servlet/Satellite?pagename=RTD%2FMGArticle%2FRTD_BasicArticle&c=MGArticle&cid=1128768408958&path=%21sports&s=1045855934844)

[Go Back](#)

2005-06 Longwood Men's Basketball  
 Longwood High/Low Analysis (as of Dec 01, 2005)  
 All games

Longwood - TEAM GAME HIGHS

POINTS.....	93	vs Virginia-Wise (11-26-05)
	88	vs Liberty (11-30-05)
	75	vs William and Mary (11-28-05)
	73	vs Louisiana Tech (11-19-05)
	67	vs Yale (11-20-05)
FIELD GOALS MADE.....	38	vs Virginia-Wise (11-26-05)
	29	vs Liberty (11-30-05)
	29	vs William and Mary (11-28-05)
FIELD GOAL ATTEMPTS.....	81	vs Virginia-Wise (11-26-05)
	65	vs Yale (11-20-05)
FIELD GOAL PERCENTAGE.....	.500 (28-56)	vs Louisiana Tech (11-19-05)
	.483 (29-60)	vs Liberty (11-30-05)
3 PT FIELD GOALS MADE.....	12	at Nebraska (11-18-05)
	8	vs Virginia-Wise (11-26-05)
3 PT FG ATTEMPTS.....	28	at Nebraska (11-18-05)
	26	vs Virginia-Wise (11-26-05)
3 PT FG PERCENTAGE.....	.429 (12-28)	at Nebraska (11-18-05)
	.429 ( 3-7 )	vs Liberty (11-30-05)
FREE THROWS MADE.....	27	vs Liberty (11-30-05)
	14	vs Yale (11-20-05)
FREE THROW ATTEMPTS.....	35	vs Liberty (11-30-05)
	23	vs Yale (11-20-05)
FREE THROW PERCENTAGE.....	.846 (11-13)	vs Louisiana Tech (11-19-05)
	.771 (27-35)	vs Liberty (11-30-05)
REBOUNDS.....	51	vs Virginia-Wise (11-26-05)
	42	vs Yale (11-20-05)
ASSISTS.....	21	vs Virginia-Wise (11-26-05)
	20	vs Louisiana Tech (11-19-05)
STEALS.....	14	vs Virginia-Wise (11-26-05)
	11	vs Liberty (11-30-05)
	11	vs William and Mary (11-28-05)
BLOCKED SHOTS.....	4	vs William and Mary (11-28-05)
	4	vs Virginia-Wise (11-26-05)
	4	vs Yale (11-20-05)
TURNOVERS.....	23	vs Louisiana Tech (11-19-05)
	19	at Nebraska (11-18-05)
FOULS.....	27	vs Yale (11-20-05)
	26	at Nebraska (11-18-05)

2005-06 Longwood Men's Basketball  
 Longwood High/Low Analysis (as of Dec 01, 2005)  
 All games

Opponent - GAME HIGHS

POINTS.....	88	vs William and Mary (11-28-05)
	83	vs Louisiana Tech (11-19-05)
	80	at Nebraska (11-18-05)
	75	vs Liberty (11-30-05)
	70	vs Yale (11-20-05)
FIELD GOALS MADE.....	31	vs Liberty (11-30-05)
	29	vs William and Mary (11-28-05)
	29	vs Louisiana Tech (11-19-05)
	29	at Nebraska (11-18-05)
FIELD GOAL ATTEMPTS.....	61	vs Yale (11-20-05)
	60	vs William and Mary (11-28-05)
FIELD GOAL PERCENTAGE.....	.537 (29-54)	vs Louisiana Tech (11-19-05)
	.534 (31-58)	vs Liberty (11-30-05)
3 PT FIELD GOALS MADE.....	7	vs William and Mary (11-28-05)
	7	at Nebraska (11-18-05)
3 PT FG ATTEMPTS.....	16	vs William and Mary (11-28-05)
	15	vs Virginia-Wise (11-26-05)
	15	at Nebraska (11-18-05)
3 PT FG PERCENTAGE.....	.467 ( 7-15)	at Nebraska (11-18-05)
	.438 ( 7-16)	vs William and Mary (11-28-05)
FREE THROWS MADE.....	23	vs William and Mary (11-28-05)
	22	vs Yale (11-20-05)
	22	vs Louisiana Tech (11-19-05)
FREE THROW ATTEMPTS.....	33	vs Louisiana Tech (11-19-05)
	32	vs Yale (11-20-05)
FREE THROW PERCENTAGE.....	.793 (23-29)	vs William and Mary (11-28-05)
	.692 ( 9-13)	vs Liberty (11-30-05)
REBOUNDS.....	48	vs Yale (11-20-05)
	45	at Nebraska (11-18-05)
ASSISTS.....	19	vs William and Mary (11-28-05)
	17	at Nebraska (11-18-05)
STEALS.....	9	vs Liberty (11-30-05)
	9	vs Louisiana Tech (11-19-05)
BLOCKED SHOTS.....	4	vs Yale (11-20-05)
	3	vs Liberty (11-30-05)
TURNOVERS.....	21	vs Liberty (11-30-05)
	21	vs Virginia-Wise (11-26-05)
	21	at Nebraska (11-18-05)
FOULS.....	25	vs Liberty (11-30-05)
	21	vs William and Mary (11-28-05)

2005-06 Longwood Men's Basketball  
 Longwood High/Low Analysis (as of Dec 01, 2005)  
 All games

Longwood - GAME LOWS

POINTS.....	65	at Nebraska (11-18-05)
	67	vs Yale (11-20-05)
	73	vs Louisiana Tech (11-19-05)
	75	vs William and Mary (11-28-05)
	88	vs Liberty (11-30-05)
FIELD GOALS MADE.....	23	vs Yale (11-20-05)
	24	at Nebraska (11-18-05)
FIELD GOAL ATTEMPTS.....	56	vs Louisiana Tech (11-19-05)
	60	vs Liberty (11-30-05)
FIELD GOAL PERCENTAGE.....	.354 (23-65)	vs Yale (11-20-05)
	.393 (24-61)	at Nebraska (11-18-05)
3 PT FIELD GOALS MADE.....	3	vs Liberty (11-30-05)
	5	vs William and Mary (11-28-05)
3 PT FG ATTEMPTS.....	7	vs Liberty (11-30-05)
	18	vs Louisiana Tech (11-19-05)
	18	vs William and Mary (11-28-05)
3 PT FG PERCENTAGE.....	.278 ( 5-18)	vs William and Mary (11-28-05)
	.280 ( 7-25)	vs Yale (11-20-05)
FREE THROWS MADE.....	5	at Nebraska (11-18-05)
	9	vs Virginia-Wise (11-26-05)
FREE THROW ATTEMPTS.....	10	at Nebraska (11-18-05)
	13	vs Louisiana Tech (11-19-05)
FREE THROW PERCENTAGE.....	.500 ( 5-10)	at Nebraska (11-18-05)
	.600 ( 9-15)	vs Virginia-Wise (11-26-05)
REBOUNDS.....	28	vs Louisiana Tech (11-19-05)
	28	vs William and Mary (11-28-05)
ASSISTS.....	9	vs William and Mary (11-28-05)
	13	vs Liberty (11-30-05)
STEALS.....	6	at Nebraska (11-18-05)
	6	vs Louisiana Tech (11-19-05)
BLOCKED SHOTS.....	0	at Nebraska (11-18-05)
	0	vs Liberty (11-30-05)
TURNOVERS.....	9	vs Virginia-Wise (11-26-05)
	15	vs William and Mary (11-28-05)
	15	vs Liberty (11-30-05)
FOULS.....	17	vs Liberty (11-30-05)
	20	vs Virginia-Wise (11-26-05)

2005-06 Longwood Men's Basketball  
 Longwood High/Low Analysis (as of Dec 01, 2005)  
 All games

Opponent - GAME LOWS

POINTS.....	49	vs Virginia-Wise (11-26-05)
	70	vs Yale (11-20-05)
	75	vs Liberty (11-30-05)
	80	at Nebraska (11-18-05)
	83	vs Louisiana Tech (11-19-05)
FIELD GOALS MADE.....	16	vs Virginia-Wise (11-26-05)
	23	vs Yale (11-20-05)
FIELD GOAL ATTEMPTS.....	49	vs Virginia-Wise (11-26-05)
	54	vs Louisiana Tech (11-19-05)
FIELD GOAL PERCENTAGE.....	.327 (16-49)	vs Virginia-Wise (11-26-05)
	.377 (23-61)	vs Yale (11-20-05)
3 PT FIELD GOALS MADE.....	2	vs Yale (11-20-05)
	3	vs Louisiana Tech (11-19-05)
3 PT FG ATTEMPTS.....	10	vs Louisiana Tech (11-19-05)
	10	vs Yale (11-20-05)
3 PT FG PERCENTAGE.....	.200 ( 2-10)	vs Yale (11-20-05)
	.267 ( 4-15)	vs Virginia-Wise (11-26-05)
FREE THROWS MADE.....	9	vs Liberty (11-30-05)
	13	vs Virginia-Wise (11-26-05)
FREE THROW ATTEMPTS.....	13	vs Liberty (11-30-05)
	19	vs Virginia-Wise (11-26-05)
FREE THROW PERCENTAGE.....	.556 (15-27)	at Nebraska (11-18-05)
	.667 (22-33)	vs Louisiana Tech (11-19-05)
REBOUNDS.....	28	vs Liberty (11-30-05)
	32	vs Louisiana Tech (11-19-05)
	32	vs Virginia-Wise (11-26-05)
ASSISTS.....	3	vs Virginia-Wise (11-26-05)
	10	vs Liberty (11-30-05)
STEALS.....	5	vs Virginia-Wise (11-26-05)
	5	vs William and Mary (11-28-05)
BLOCKED SHOTS.....	0	vs William and Mary (11-28-05)
	1	vs Virginia-Wise (11-26-05)
TURNOVERS.....	19	vs William and Mary (11-28-05)
	20	vs Louisiana Tech (11-19-05)
	20	vs Yale (11-20-05)
FOULS.....	14	vs Virginia-Wise (11-26-05)
	15	at Nebraska (11-18-05)

2005-06 Longwood Men's Basketball  
 Longwood High/Low Analysis (as of Dec 01, 2005)  
 All games

Longwood - INDIVIDUAL GAME HIGHS

POINTS.....	26	Jefferson, Michael vs Louisiana Tech (11-19-05)
	22	Jefferson, Michael vs Liberty (11-30-05)
	17	Williams, Kirk vs Liberty (11-30-05)
	17	Sumter, Maurice at Nebraska (11-18-05)
	16	Jefferson, Michael vs William and Mary (11-28-05)
FIELD GOALS MADE.....	8	Jefferson, Michael vs Louisiana Tech (11-19-05)
	7	Jefferson, Michael vs Liberty (11-30-05)
	7	Williams, Kirk vs Liberty (11-30-05)
	7	Sumter, Maurice at Nebraska (11-18-05)
FIELD GOAL ATT.....	16	Jefferson, Michael vs Virginia-Wise (11-26-05)
	15	Sumter, Maurice at Nebraska (11-18-05)
FG PCT (min 5 made).....	1.000 ( 6-6 )	Smith, Dana vs Virginia-Wise (11-26-05)
	.778 ( 7-9 )	Williams, Kirk vs Liberty (11-30-05)
3 PT FG MADE.....	4	Jefferson, Michael vs Louisiana Tech (11-19-05)
	4	Smith, Dana at Nebraska (11-18-05)
3 PT FG ATTEMPTS.....	9	Butler, Bryan at Nebraska (11-18-05)
	7	Pistoljevic, Husein vs Virginia-Wise (11-26-05)
3-PT FG PCT (min 2 made).....	1.000 ( 4-4 )	Smith, Dana at Nebraska (11-18-05)
	.667 ( 4-6 )	Jefferson, Michael vs Louisiana Tech (11-19-05)
	.667 ( 2-3 )	Butler, Bryan vs Liberty (11-30-05)
FREE THROWS MADE.....	7	Jefferson, Michael vs Liberty (11-30-05)
	6	Morgan, Clayton vs Liberty (11-30-05)
	6	Jefferson, Michael vs Louisiana Tech (11-19-05)
FREE THROW ATT.....	8	Jefferson, Michael vs Liberty (11-30-05)
	7	Morgan, Clayton vs Liberty (11-30-05)
FT PCT (min 3 made).....	1.000 ( 6-6 )	Jefferson, Michael vs Louisiana Tech (11-19-05)
	1.000 ( 4-4 )	Jefferson, Michael vs Yale (11-20-05)
REBOUNDS.....	9	Sumter, Maurice vs Liberty (11-30-05)
	9	Morgan, Clayton vs William and Mary (11-28-05)
	9	Smith, Dana vs Virginia-Wise (11-26-05)
	9	Williams, Kirk vs Virginia-Wise (11-26-05)
	9	Kosmo, Chad vs Yale (11-20-05)
ASSISTS.....	5	Jefferson, Michael vs Liberty (11-30-05)
	5	Sumter, Maurice vs Yale (11-20-05)
	5	Giles, Brandon at Nebraska (11-18-05)
STEALS.....	5	Butler, Bryan vs Liberty (11-30-05)
	3	Jefferson, Michael vs Liberty (11-30-05)
	3	Sumter, Maurice vs William and Mary (11-28-05)
	3	Jefferson, Michael vs William and Mary (11-28-05)
	3	Butler, Bryan vs William and Mary (11-28-05)
	3	Sumter, Maurice vs Virginia-Wise (11-26-05)
	3	Butler, Bryan vs Virginia-Wise (11-26-05)
	3	Smith, Dana vs Virginia-Wise (11-26-05)
	3	Sumter, Maurice vs Yale (11-20-05)
	3	Barrett, Lamar at Nebraska (11-18-05)
BLOCKED SHOTS.....	2	Kosmo, Chad vs Virginia-Wise (11-26-05)
	2	Sumter, Maurice vs Yale (11-20-05)
TURNOVERS.....	8	Butler, Bryan vs Louisiana Tech (11-19-05)
	5	Sumter, Maurice vs William and Mary (11-28-05)
FOULS.....	5	Williams, Kirk vs William and Mary (11-28-05)
	5	Morgan, Clayton vs William and Mary (11-28-05)
	5	Smith, Dana vs William and Mary (11-28-05)
	5	Holmes, Darren vs Virginia-Wise (11-26-05)

2005-06 Longwood Men's Basketball  
 Longwood Category Leaders (as of Dec 01, 2005)  
 All games

FG PERCENTAGE	FG ATT	Pct
Holmes, Darren.....	2 3	.667
Williams, Kirk.....	19 32	.594
Smith, Dana.....	17 29	.586
Barrett, Lamar.....	20 42	.476
Butler, Bryan.....	27 61	.443
Sumter, Maurice.....	29 69	.420
Jefferson, Michael..	29 71	.408
Kosmo, Chad.....	4 10	.400
Pistoljevic, Husein.	6 15	.400
Morgan, Clayton.....	14 36	.389
Rowe, Joel.....	1 3	.333
Giles, Brandon.....	3 15	.200

FIELD GOAL ATTEMPTS	G	Att	Att/G
Jefferson, Michael..	6	71	11.8
Sumter, Maurice.....	6	69	11.5
Butler, Bryan.....	6	61	10.2
Barrett, Lamar.....	6	42	7.0
Morgan, Clayton.....	6	36	6.0

FIELD GOALS MADE	G	Made	Made/G
Jefferson, Michael..	6	29	4.8
Sumter, Maurice.....	6	29	4.8
Butler, Bryan.....	6	27	4.5
Barrett, Lamar.....	6	20	3.3
Williams, Kirk.....	6	19	3.2

3-POINT PERCENTAGE	3FG ATT	Pct
Smith, Dana.....	5 8	.625
Butler, Bryan.....	12 31	.387
Morgan, Clayton.....	3 8	.375
Jefferson, Michael..	8 23	.348
Pistoljevic, Husein.	4 12	.333
Rowe, Joel.....	1 3	.333
Sumter, Maurice.....	4 17	.235
Giles, Brandon.....	3 14	.214
Barrett, Lamar.....	1 6	.167

3-POINT FG ATTEMPTS	G	Att	Att/G
Butler, Bryan.....	6	31	5.2
Jefferson, Michael..	6	23	3.8
Sumter, Maurice.....	6	17	2.8
Giles, Brandon.....	6	14	2.3
Pistoljevic, Husein.	5	12	2.4

3-POINT FGS MADE	G	Made	Made/G
Butler, Bryan.....	6	12	2.0
Jefferson, Michael..	6	8	1.3
Smith, Dana.....	6	5	0.8
Pistoljevic, Husein.	5	4	0.8
Sumter, Maurice.....	6	4	0.7

FT PERCENTAGE	FT ATT	Pct
Giles, Brandon.....	2 2	1.000
Pistoljevic, Husein.	2 2	1.000
Jefferson, Michael..	20 22	.909
Butler, Bryan.....	7 9	.778
Sumter, Maurice.....	9 12	.750
Morgan, Clayton.....	11 15	.733
Williams, Kirk.....	15 25	.600
Smith, Dana.....	6 11	.545
Barrett, Lamar.....	4 8	.500
Kosmo, Chad.....	2 8	.250

FREE THROW ATTEMPTS	G	Att	Att/G
Williams, Kirk.....	6	25	4.2
Jefferson, Michael..	6	22	3.7
Morgan, Clayton.....	6	15	2.5
Sumter, Maurice.....	6	12	2.0
Smith, Dana.....	6	11	1.8

FREE THROWS MADE	G	Made	Made/G
Jefferson, Michael..	6	20	3.3
Williams, Kirk.....	6	15	2.5
Morgan, Clayton.....	6	11	1.8
Sumter, Maurice.....	6	9	1.5
Butler, Bryan.....	6	7	1.2

POINTS	G	Pts	Pts/G
Jefferson, Michael..	6	86	14.3
Butler, Bryan.....	6	73	12.2
Sumter, Maurice.....	6	71	11.8
Williams, Kirk.....	6	53	8.8
Barrett, Lamar.....	6	45	7.5
Smith, Dana.....	6	45	7.5
Morgan, Clayton.....	6	42	7.0
Pistoljevic, Husein.	5	18	3.6
Giles, Brandon.....	6	11	1.8
Kosmo, Chad.....	4	10	2.5
Holmes, Darren.....	3	4	1.3
Rowe, Joel.....	3	3	1.0

POINTS AVERAGE	G	Pts	Avg/G
Jefferson, Michael..	6	86	14.3
Butler, Bryan.....	6	73	12.2
Sumter, Maurice.....	6	71	11.8
Williams, Kirk.....	6	53	8.8
Barrett, Lamar.....	6	45	7.5
Smith, Dana.....	6	45	7.5
Morgan, Clayton.....	6	42	7.0
Pistoljevic, Husein.	5	18	3.6
Kosmo, Chad.....	4	10	2.5
Giles, Brandon.....	6	11	1.8
Holmes, Darren.....	3	4	1.3
Rowe, Joel.....	3	3	1.0

2005-06 Longwood Men's Basketball  
 Longwood Category Leaders (as of Dec 01, 2005)  
 All games

REBOUNDS	G	Reb	Reb/G
Morgan, Clayton.....	6	34	5.7
Sumter, Maurice.....	6	32	5.3
Williams, Kirk.....	6	27	4.5
Barrett, Lamar.....	6	20	3.3
Kosmo, Chad.....	4	18	4.5

REBOUND AVERAGE	G	Reb	Avg/G
Morgan, Clayton.....	6	34	5.7
Sumter, Maurice.....	6	32	5.3
Kosmo, Chad.....	4	18	4.5
Williams, Kirk.....	6	27	4.5
Barrett, Lamar.....	6	20	3.3

OFFENSIVE REBOUNDS	G	No.	Avg/G
Williams, Kirk.....	6	16	2.7
Barrett, Lamar.....	6	15	2.5
Morgan, Clayton.....	6	9	1.5
Sumter, Maurice.....	6	8	1.3
Smith, Dana.....	6	5	0.8
Jefferson, Michael..	6	5	0.8

DEFENSIVE REBOUNDS	G	No.	Avg/G
Morgan, Clayton.....	6	25	4.2
Sumter, Maurice.....	6	24	4.0
Kosmo, Chad.....	4	15	3.8
Butler, Bryan.....	6	13	2.2
Smith, Dana.....	6	12	2.0

FOULS	G	No.	Per/G
Smith, Dana.....	6	20	3.3
Williams, Kirk.....	6	19	3.2
Sumter, Maurice.....	6	15	2.5
Giles, Brandon.....	6	14	2.3
Barrett, Lamar.....	6	13	2.2
Morgan, Clayton.....	6	13	2.2

FOULOUTS	G	No.
Smith, Dana.....	6	3
Williams, Kirk.....	6	2
Holmes, Darren.....	3	1
Morgan, Clayton.....	6	1

ASSISTS	G	No.	A/G
Jefferson, Michael..	6	17	2.8
Giles, Brandon.....	6	15	2.5
Sumter, Maurice.....	6	14	2.3
Butler, Bryan.....	6	13	2.2
Barrett, Lamar.....	6	12	2.0

STEALS	G	No.	S/G
Butler, Bryan.....	6	14	2.3
Sumter, Maurice.....	6	11	1.8
Jefferson, Michael..	6	10	1.7
Barrett, Lamar.....	6	8	1.3
Williams, Kirk.....	6	5	0.8

BLOCKED SHOTS	G	No.	Blk/G
Smith, Dana.....	6	3	0.5
Sumter, Maurice.....	6	3	0.5
Kosmo, Chad.....	4	2	0.5
Barrett, Lamar.....	6	2	0.3
Morgan, Clayton.....	6	2	0.3

MINUTES	G	No.	Min/G
Sumter, Maurice.....	6	190	31.7
Jefferson, Michael..	6	177	29.5
Barrett, Lamar.....	6	138	23.0
Butler, Bryan.....	6	138	23.0
Morgan, Clayton.....	6	136	22.7

TURNOVERS	G	No.	TO/G
Butler, Bryan.....	6	17	2.8
Sumter, Maurice.....	6	16	2.7
Jefferson, Michael..	6	15	2.5
Morgan, Clayton.....	6	9	1.5
Smith, Dana.....	6	9	1.5

2005-06 Longwood Men's Basketball  
 Longwood Individual Game-by-Game (as of Dec 01, 2005)  
 All games

#00 Holmes, Darren

Opponent	Date	GS	Min	---TOTAL---		---3-PTS---		---FT-FTA---		----REBOUNDS----					PF	FO	A	TO	Blk	Stl	Pts	Avg
				FG-FGA	Pct	3FG-FGA	Pct	Pct	Off	Def	Tot	Avg										
at Nebraska	11-18-05		2	0-1	.000	0-0	.000	0-0	.000	0	0	0	0.0	0	0	0	0	0	0	0	0	0.0
vs Louisiana Tech	11-19-05		1	2-2	1.000	0-0	.000	0-0	.000	0	0	0	0.0	1	0	0	0	0	0	0	4	2.0
VIRGINIA-WISE	11-26-05		7	0-0	.000	0-0	.000	0-0	.000	1	2	3	1.0	5	1	0	2	0	0	0	0	1.3
Totals.....		0	10	2-3	.667	0-0	.000	0-0	.000	1	2	3	1.0	6	1	0	2	0	0	4	1.3	

Games played: 3  
 Points/game: 1.3  
 FG Pct: 66.7

Rebounds/game: 1.0  
 Turnovers/game: 0.7

2005-06 Longwood Men's Basketball  
 Longwood Individual Game-by-Game (as of Dec 01, 2005)  
 All games

#01 Morgan, Clayton

Opponent	Date	GS	Min	---TOTAL---		---3-PTS---		---FT-FTA---		----REBOUNDS----						PF	FO	A	TO	Blk	Stl	Pts	Avg
				FG-FGA	Pct	3FG-FGA	Pct	Pct	Off	Def	Tot	Avg											
at Nebraska	11-18-05		21	1-5	.200	0-2	.000	0-0	.000	0	2	2	2.0	2	0	0	1	0	0	0	2	2.0	
vs Louisiana Tech	11-19-05		16	0-2	.000	0-0	.000	0-0	.000	0	0	0	1.0	0	0	1	4	1	1	0	0	1.0	
vs Yale	11-20-05		20	2-8	.250	1-3	.333	0-0	.000	3	5	8	3.3	2	0	3	1	0	0	5	2.3		
VIRGINIA-WISE	11-26-05		17	5-7	.714	1-1	1.000	2-3	.667	1	7	8	4.5	2	0	2	1	0	1	13	5.0		
WILLIAM AND MARY	11-28-05	*	31	3-8	.375	1-1	1.000	3-5	.600	2	7	9	5.4	5	1	0	0	1	1	10	6.0		
LIBERTY	11-30-05	*	31	3-6	.500	0-1	.000	6-7	.857	3	4	7	5.7	2	0	1	2	0	0	12	7.0		
Totals.....		2	136	14-36	.389	3-8	.375	11-15	.733	9	25	34	5.7	13	1	7	9	2	3	42	7.0		

Games played: 6  
 Points/game: 7.0  
 FG Pct: 38.9  
 3FG Pct: 37.5  
 FT Pct: 73.3

Rebounds/game: 5.7  
 Assists/game: 1.2  
 Turnovers/game: 1.5  
 Assist/turnover ratio: 0.8  
 Steals/game: 0.5  
 Blocks/game: 0.3

2005-06 Longwood Men's Basketball  
 Longwood Individual Game-by-Game (as of Dec 01, 2005)  
 All games

#03 Williams, Kirk

Opponent	Date	GS	Min	---TOTAL---		---3-PTS---		FT-FTA		----REBOUNDS----				PF	FO	A	TO	Blk	Stl	Pts	Avg
				FG-FGA	Pct	3FG-FGA	Pct	Pct	Off	Def	Tot	Avg									
at Nebraska	11-18-05		15	2-4	.500	0-0	.000	1-2	.500	5	1	6	6.0	2	0	0	1	0	0	5	5.0
vs Louisiana Tech	11-19-05		17	4-4	1.000	0-0	.000	5-6	.833	1	2	3	4.5	5	1	1	0	0	2	13	9.0
vs Yale	11-20-05		15	3-6	.500	0-0	.000	2-3	.667	2	1	3	4.0	4	0	0	2	0	1	8	8.7
VIRGINIA-WISE	11-26-05		21	2-5	.400	0-0	.000	3-6	.500	6	3	9	5.3	0	0	1	0	0	1	7	8.3
WILLIAM AND MARY	11-28-05		15	1-4	.250	0-0	.000	1-2	.500	1	2	3	4.8	5	1	1	4	1	0	3	7.2
LIBERTY	11-30-05		17	7-9	.778	0-0	.000	3-6	.500	1	2	3	4.5	3	0	0	0	0	1	17	8.8
Totals.....		0	100	19-32	.594	0-0	.000	15-25	.600	16	11	27	4.5	19	2	3	7	1	5	53	8.8

Games played: 6  
 Points/game: 8.8  
 FG Pct: 59.4  
 FT Pct: 60.0

Rebounds/game: 4.5  
 Assists/game: 0.5  
 Turnovers/game: 1.2  
 Assist/turnover ratio: 0.4  
 Steals/game: 0.8  
 Blocks/game: 0.2

2005-06 Longwood Men's Basketball  
 Longwood Individual Game-by-Game (as of Dec 01, 2005)  
 All games

#10 Giles, Brandon

Opponent	Date	GS	Min	---TOTAL---		---3-PTS---		---FT-FTA---		----REBOUNDS----												
				FG-FGA	Pct	3FG-FGA	Pct	Pct	Off	Def	Tot	Avg	PF	FO	A	TO	Blk	Stl	Pts	Avg		
at Nebraska	11-18-05		20	0-3	.000	0-2	.000	0-0	.000	0	2	2	2.0	2	0	5	3	0	0	0	0	0.0
vs Louisiana Tech	11-19-05		13	0-2	.000	0-2	.000	0-0	.000	0	1	1	1.5	0	0	3	0	0	0	0	0	0.0
vs Yale	11-20-05		17	2-4	.500	2-4	.500	0-0	.000	0	3	3	2.0	4	0	1	0	0	0	6	2.0	
VIRGINIA-WISE	11-26-05		11	1-5	.200	1-5	.200	0-0	.000	0	0	0	1.5	4	0	2	0	0	0	3	2.3	
WILLIAM AND MARY	11-28-05		12	0-1	.000	0-1	.000	0-0	.000	0	1	1	1.4	2	0	1	1	0	0	0	1.8	
LIBERTY	11-30-05		14	0-0	.000	0-0	.000	2-2	1.000	0	0	0	1.2	2	0	3	0	0	0	2	1.8	
Totals.....		0	87	3-15	.200	3-14	.214	2-2	1.000	0	7	7	1.2	14	0	15	4	0	0	11	1.8	

Games played: 6  
 Points/game: 1.8  
 FG Pct: 20.0  
 3FG Pct: 21.4  
 FT Pct: 100.0

Rebounds/game: 1.2  
 Assists/game: 2.5  
 Turnovers/game: 0.7  
 Assist/turnover ratio: 3.8

2005-06 Longwood Men's Basketball  
 Longwood Individual Game-by-Game (as of Dec 01, 2005)  
 All games

#12 Butler, Bryan

Opponent	Date	GS	Min	---TOTAL---		---3-PTS---		FT-FTA		----REBOUNDS----				PF	FO	A	TO	Blk	Stl	Pts	Avg
				FG-FGA	Pct	3FG-FGA	Pct	Pct	Off	Def	Tot	Avg									
at Nebraska	11-18-05	*	20	6-14	.429	3-9	.333	0-0	.000	0	2	2	2.0	3	0	4	4	0	1	15	15.0
vs Louisiana Tech	11-19-05	*	24	3-9	.333	0-3	.000	0-1	.000	2	2	4	3.0	2	0	3	8	0	0	6	10.5
vs Yale	11-20-05	*	23	3-11	.273	2-6	.333	2-2	1.000	2	2	4	3.3	2	0	0	2	0	2	10	10.3
VIRGINIA-WISE	11-26-05	*	19	5-10	.500	2-4	.500	0-0	.000	0	3	3	3.3	1	0	3	0	0	3	12	10.8
WILLIAM AND MARY	11-28-05	*	25	6-10	.600	3-6	.500	0-0	.000	0	1	1	2.8	0	0	0	2	0	3	15	11.6
LIBERTY	11-30-05	*	27	4-7	.571	2-3	.667	5-6	.833	0	3	3	2.8	2	0	3	1	0	5	15	12.2
Totals.....		6	138	27-61	.443	12-31	.387	7-9	.778	4	13	17	2.8	10	0	13	17	0	14	73	12.2

Games played: 6  
 Points/game: 12.2  
 FG Pct: 44.3  
 3FG Pct: 38.7  
 FT Pct: 77.8

Rebounds/game: 2.8  
 Assists/game: 2.2  
 Turnovers/game: 2.8  
 Assist/turnover ratio: 0.8  
 Steals/game: 2.3

2005-06 Longwood Men's Basketball  
 Longwood Individual Game-by-Game (as of Dec 01, 2005)  
 All games

#15 Rowe, Joel

Opponent	Date	GS	Min	---TOTAL---		---3-PTS---		---FT-FTA---		----REBOUNDS----					PF	FO	A	TO	Blk	Stl	Pts	Avg
				FG-FGA	Pct	3FG-FGA	Pct	Pct	Off	Def	Tot	Avg										
at Nebraska	11-18-05		1	0-1	.000	0-1	.000	0-0	.000	0	0	0	0.0	1	0	0	0	0	0	0	0.0	
vs Louisiana Tech	11-19-05		2	1-1	1.000	1-1	1.000	0-0	.000	0	0	0	0.0	0	0	1	0	0	0	3	1.5	
VIRGINIA-WISE	11-26-05		11	0-1	.000	0-1	.000	0-0	.000	0	0	0	0.0	2	0	1	1	0	0	0	1.0	
Totals.....		0	14	1-3	.333	1-3	.333	0-0	.000	0	0	0	0.0	3	0	2	1	0	0	3	1.0	

Games played: 3  
 Points/game: 1.0  
 FG Pct: 33.3  
 3FG Pct: 33.3

Assists/game: 0.7  
 Turnovers/game: 0.3  
 Assist/turnover ratio: 2.0

2005-06 Longwood Men's Basketball  
 Longwood Individual Game-by-Game (as of Dec 01, 2005)  
 All games

#20 Jefferson, Michael

Opponent	Date	GS	Min	---TOTAL---		---3-PTS---		---FT-FTA---		----REBOUNDS----											
				FG-FGA	Pct	3FG-FGA	Pct	Pct	Off	Def	Tot	Avg	PF	FO	A	TO	Blk	Stl	Pts	Avg	
at Nebraska	11-18-05	*	31	1-6	.167	0-1	.000	0-0	.000	1	2	3	3.0	2	0	3	4	0	0	2	2.0
vs Louisiana Tech	11-19-05	*	32	8-14	.571	4-6	.667	6-6	1.000	0	0	0	1.5	4	0	2	3	1	1	26	14.0
vs Yale	11-20-05	*	23	2-7	.286	1-5	.200	4-4	1.000	0	1	1	1.3	4	0	3	2	0	1	9	12.3
VIRGINIA-WISE	11-26-05	*	21	5-16	.313	1-5	.200	0-0	.000	2	1	3	1.8	0	0	3	2	0	2	11	12.0
WILLIAM AND MARY	11-28-05	*	33	6-14	.429	1-4	.250	3-4	.750	0	2	2	1.8	0	0	1	0	0	3	16	12.8
LIBERTY	11-30-05	*	37	7-14	.500	1-2	.500	7-8	.875	2	4	6	2.5	2	0	5	4	0	3	22	14.3
Totals.....		6	177	29-71	.408	8-23	.348	20-22	.909	5	10	15	2.5	12	0	17	15	1	10	86	14.3

Games played: 6  
 Points/game: 14.3  
 FG Pct: 40.8  
 3FG Pct: 34.8  
 FT Pct: 90.9

Rebounds/game: 2.5  
 Assists/game: 2.8  
 Turnovers/game: 2.5  
 Assist/turnover ratio: 1.1  
 Steals/game: 1.7  
 Blocks/game: 0.2

2005-06 Longwood Men's Basketball  
 Longwood Individual Game-by-Game (as of Dec 01, 2005)  
 All games

#22 Smith, Dana

Opponent	Date	GS	Min	---TOTAL---		---3-PTS---		---FT-FTA---		----REBOUNDS----					PF	FO	A	TO	Blk	Stl	Pts	Avg
				FG-FGA	Pct	3FG-FGA	Pct	Pct	Off	Def	Tot	Avg										
at Nebraska	11-18-05		15	4-5	.800	4-4	1.000	0-0	.000	0	2	2	2.0	5	1	1	1	0	0	12	12.0	
vs Louisiana Tech	11-19-05		10	1-4	.250	0-1	.000	0-0	.000	0	1	1	1.5	5	1	0	1	0	0	2	7.0	
vs Yale	11-20-05		20	3-6	.500	0-1	.000	2-5	.400	1	3	4	2.3	1	0	1	3	1	1	8	7.3	
VIRGINIA-WISE	11-26-05		21	6-6	1.000	1-1	1.000	2-2	1.000	4	5	9	4.0	1	0	3	0	1	3	15	9.3	
WILLIAM AND MARY	11-28-05		17	3-3	1.000	0-0	.000	1-2	.500	0	0	0	3.2	5	1	1	1	1	0	7	8.8	
LIBERTY	11-30-05		17	0-5	.000	0-1	.000	1-2	.500	0	1	1	2.8	3	0	0	3	0	0	1	7.5	
Totals.....		0	100	17-29	.586	5-8	.625	6-11	.545	5	12	17	2.8	20	3	6	9	3	4	45	7.5	

Games played: 6  
 Points/game: 7.5  
 FG Pct: 58.6  
 3FG Pct: 62.5  
 FT Pct: 54.5

Rebounds/game: 2.8  
 Assists/game: 1.0  
 Turnovers/game: 1.5  
 Assist/turnover ratio: 0.7  
 Steals/game: 0.7  
 Blocks/game: 0.5

2005-06 Longwood Men's Basketball  
 Longwood Individual Game-by-Game (as of Dec 01, 2005)  
 All games

#32 Pistoljevic, Husein

Opponent	Date	GS	Min	---TOTAL---		---3-PTS---		---FT-FTA---		----REBOUNDS----				PF	FO	A	TO	Blk	Stl	Pts	Avg
				FG-FGA	Pct	3FG-FGA	Pct	Pct	Off	Def	Tot	Avg									
at Nebraska	11-18-05		13	1-3	.333	1-3	.333	2-2	1.000	0	3	3	3.0	1	0	0	1	0	1	5	5.0
vs Louisiana Tech	11-19-05		9	0-1	.000	0-0	.000	0-0	.000	0	0	0	1.5	1	0	0	2	0	0	0	2.5
vs Yale	11-20-05		8	1-2	.500	1-2	.500	0-0	.000	0	0	0	1.0	1	0	1	0	0	0	3	2.7
VIRGINIA-WISE	11-26-05		18	4-9	.444	2-7	.286	0-0	.000	0	0	0	0.8	0	0	1	1	0	0	10	4.5
WILLIAM AND MARY	11-28-05		8	0-0	.000	0-0	.000	0-0	.000	0	0	0	0.6	0	0	0	0	0	0	0	3.6
Totals.....		0	56	6-15	.400	4-12	.333	2-2	1.000	0	3	3	0.6	3	0	2	4	0	1	18	3.6

Games played: 5  
 Points/game: 3.6  
 FG Pct: 40.0  
 3FG Pct: 33.3  
 FT Pct: 100.0

Rebounds/game: 0.6  
 Assists/game: 0.4  
 Turnovers/game: 0.8  
 Assist/turnover ratio: 0.5  
 Steals/game: 0.2

2005-06 Longwood Men's Basketball  
 Longwood Individual Game-by-Game (as of Dec 01, 2005)  
 All games

#42 Kosmo, Chad

Opponent	Date	GS	Min	---TOTAL---		---3-PTS---		FT-FTA		----REBOUNDS----				PF	FO	A	TO	Blk	Stl	Pts	Avg
				FG-FGA	Pct	3FG-FGA	Pct	Pct	Off	Def	Tot	Avg									
at Nebraska	11-18-05	*	14	0-2	.000	0-0	.000	2-6	.333	0	3	3	3.0	4	0	0	1	0	0	2	2.0
vs Louisiana Tech	11-19-05	*	15	0-0	.000	0-0	.000	0-0	.000	1	2	3	3.0	2	0	3	1	0	1	0	1.0
vs Yale	11-20-05	*	15	1-3	.333	0-0	.000	0-2	.000	0	9	9	5.0	4	0	1	4	0	0	2	1.3
VIRGINIA-WISE	11-26-05	*	10	3-5	.600	0-0	.000	0-0	.000	2	1	3	4.5	0	0	0	1	2	0	6	2.5
Totals.....		4	54	4-10	.400	0-0	.000	2-8	.250	3	15	18	4.5	10	0	4	7	2	1	10	2.5

Games played: 4  
 Points/game: 2.5  
 FG Pct: 40.0  
 FT Pct: 25.0

Rebounds/game: 4.5  
 Assists/game: 1.0  
 Turnovers/game: 1.8  
 Assist/turnover ratio: 0.6  
 Steals/game: 0.3  
 Blocks/game: 0.5

2005-06 Longwood Men's Basketball  
 Longwood Individual Game-by-Game (as of Dec 01, 2005)  
 All games

#45 Sumter, Maurice

Opponent	Date	GS	Min	---TOTAL---		---3-PTS---		FT-FTA		----REBOUNDS----						PF	FO	A	TO	Blk	Stl	Pts	Avg
				FG-FGA	Pct	3FG-FGA	Pct	Pct	Off	Def	Tot	Avg											
at Nebraska	11-18-05	*	34	7-15	.467	3-5	.600	0-0	.000	1	2	3	3.0	2	0	1	2	0	1	17	17.0		
vs Louisiana Tech	11-19-05	*	36	5-10	.500	1-4	.250	0-0	.000	1	7	8	5.5	2	0	2	2	0	1	11	14.0		
vs Yale	11-20-05	*	34	4-12	.333	0-3	.000	3-4	.750	1	1	2	4.3	4	0	5	2	2	3	11	13.0		
VIRGINIA-WISE	11-26-05	*	22	3-9	.333	0-2	.000	0-0	.000	2	3	5	4.5	2	0	4	1	1	3	6	11.3		
WILLIAM AND MARY	11-28-05	*	30	4-11	.364	0-3	.000	3-4	.750	1	4	5	4.6	4	0	2	5	0	3	11	11.2		
LIBERTY	11-30-05	*	34	6-12	.500	0-0	.000	3-4	.750	2	7	9	5.3	1	0	0	4	0	0	15	11.8		
Totals.....		6	190	29-69	.420	4-17	.235	9-12	.750	8	24	32	5.3	15	0	14	16	3	11	71	11.8		

Games played: 6  
 Points/game: 11.8  
 FG Pct: 42.0  
 3FG Pct: 23.5  
 FT Pct: 75.0

Rebounds/game: 5.3  
 Assists/game: 2.3  
 Turnovers/game: 2.7  
 Assist/turnover ratio: 0.9  
 Steals/game: 1.8  
 Blocks/game: 0.5

2005-06 Longwood Men's Basketball  
 Longwood Individual Game-by-Game (as of Dec 01, 2005)  
 All games

#50 Barrett, Lamar

Opponent	Date	GS	Min	---TOTAL---		---3-PTS---		FT-FTA		----REBOUNDS----				PF	FO	A	TO	Blk	Stl	Pts	Avg
				FG-FGA	Pct	3FG-FGA	Pct	Pct	Off	Def	Tot	Avg									
at Nebraska	11-18-05	*	14	2-2	1.000	1-1	1.000	0-0	.000	3	0	3	3.0	2	0	2	1	0	3	5	5.0
vs Louisiana Tech	11-19-05	*	25	4-7	.571	0-1	.000	0-0	.000	3	2	5	4.0	3	0	4	1	0	0	8	6.5
vs Yale	11-20-05	*	25	2-6	.333	0-1	.000	1-3	.333	2	2	4	4.0	1	0	1	1	1	1	5	6.0
VIRGINIA-WISE	11-26-05	*	22	4-8	.500	0-0	.000	2-4	.500	3	1	4	4.0	3	0	1	0	0	1	10	7.0
WILLIAM AND MARY	11-28-05	*	29	6-12	.500	0-3	.000	1-1	1.000	3	0	3	3.8	2	0	3	2	1	1	13	8.2
LIBERTY	11-30-05	*	23	2-7	.286	0-0	.000	0-0	.000	1	0	1	3.3	2	0	1	1	0	2	4	7.5
Totals.....		6	138	20-42	.476	1-6	.167	4-8	.500	15	5	20	3.3	13	0	12	6	2	8	45	7.5

Games played: 6  
 Points/game: 7.5  
 FG Pct: 47.6  
 3FG Pct: 16.7  
 FT Pct: 50.0

Rebounds/game: 3.3  
 Assists/game: 2.0  
 Turnovers/game: 1.0  
 Assist/turnover ratio: 2.0  
 Steals/game: 1.3  
 Blocks/game: 0.3